

Hey You! What Do You Do?

Every month, you look to the Main Meeting for someone who has something to tell you what to do with your computer. This month, we turn that inside out.

Yes, somebody is going to stand up front and talk to you, but we are gonna get you to talk back. We want to know what you actually do with your computer.

Not just another Q & A, we want to hear from you how you use your computer on a day-to-day basis, and what software you use to do it. You don't have to work on cancer cures or anything to say something useful about your computer. Most of us find computers useful for everyday things. How about you?

What are your experiences with getting things done? What can you do that you couldn't get done before you got a computer to do it? How

does the computer help you get things done. How does it hinder? How could it be better? What do you wish it would do that it doesn't do now?

We want to know what you do, and what you think.

Doing this with the group

will not only give other people ideas about what they can do, but you will certainly come out of this with some new ideas of things you can accomplish that you didn't think of before.

Along with the brainstorming, there'll be good fun, good food, and good friends all around. Come to the Main Meeting and let everybody know!



No task is beyond the modern PC

Raffle!

This month, the Jabra Cruiser2 Bluetooth Speakerphone. It features superior sound for hands-free calls in the car. Installation not needed, just clip it onto the sun visor. Noise Blackout™ technology. Find more information on its features at: <http://headsets.onlinephonestore.com/details/37209/jabra-cruiser-2.html>. It's YOURS for the price of a ticket.

Tickets are \$5 each, available where you sign in. Need not be present to win.



What's Inside:

Newsletter Information..... 2	Map & Directions to Main Meeting..... 3	Expiring Memberships.....8
PC Community Officers..... 2	Quick Tips..... 4	SIG Meeting Info 9
About PC Community 2	3rd Generation Amazon.com Kindle ... 5	Penguin Partition 9
PCC Announcements..... 3	Smart Computing Tech Talk..... 6	Main & Exec. Meeting Minutes.....10
Map to PCC Clubhouse 3	Clubhouse Information 8	PCC Events Calendar.....12

PCC News is the monthly newsletter of
 PC Community (PC Clubhouse)
 P.O. Box 55513
 Hayward, CA 94545-0513

About PC Community



EDITOR
Elsie Smith
 lcms@pacbell.net

Associate Editor: Jan Fagerholm

Online Editor: Diane George

Contributors: Bayle Emlein, Jan Fagerholm, Diane George, Chuck Horner and Elsie Smith.

Deadline: Copy must be submitted no later than the second Saturday prior to the main meeting. Check the newsletter calendar for the date. Submissions should be made by e-mail to the editor, **lcms@pacbell.net**. Advertising rates are available from the editor.

Contents © 2010 PC Community, except as noted. Permission for reproduction in whole or in part is granted to other computer user groups for internal, non-profit use, provided credit is given to PC Community and to the authors of the material.



Adobe InDesign CS2 is used to publish
 PCC News

PCC Officers and Staff

- President — Chuck Horner**
 churck@comcast.net (510) 589-9677
- Executive Vice President — Sally Holt**
 nole62@pacbell.net (510) 785-3593
- Treasurer — Tom Smith**
 smith-tf@pacbell.net (510) 545-2077
- Secretary — Bayle Emlein**
 pcc@ix.netcom.com (510) 652-1726
- VP Clubhouse — Sidney Jordan**
 sjordan321@aol.com (510) 886-8188
- VP Marketing — New VP Needed**
 you@righthere.com (510) 555-1234
- VP Membership — Jan Fagerholm**
 pcc4me@gmail.com (510) 213-8421
- VP Newsletter — Elsie Smith**
 lcms@pacbell.net (510) 545-2077
- VP Programs — New VP Needed**
 you@righthere.com (510) 555-1234
- VP Special Projects — Bayle Emlein**
 pcc@ix.netcom.com (510) 652-1726
- Webmaster — Diane George**
 digeorge@sbcglobal.net (510) 538-2449
- APCUG Representative — Diane George**
 digeorge@sbcglobal.net (510) 538-2449
- Network Coordinator — Paul Cooper**
 paulc2553@yahoo.com (510) 733-2613
- Projector Coordinator — Jan Fagerholm**
 pcc4me@gmail.com (510) 213-8421

Board of Directors

- Bayle Emlein**
 pcc@ix.netcom.com (510) 652-1726
- Jan Fagerholm**
 pcc4me@gmail.com (510) 213-8421
- Sally Holt**
 nole62@pacbell.net (510) 785-3593
- Chuck Horner**
 churck@comcast.net (510) 589-9677
- Elsie Smith**
 lcms@pacbell.net (510) 545-2077

Clubhouse Hours

The Hayward Adult School has changed its schedule, affecting the Clubhouse hours. Schedule is as follows:

Wednesdays - 4:00 PM to 7:00 PM
 Saturdays: 8:30 PM to 1:00 PM
 Clubhouse Phone # **510-537-4138**

PC Community is a computer users group for people who wish to expand their knowledge and experience of personal computers and software. This is accomplished through monthly general meetings of the full membership where major industry vendors present information, and through smaller focus groups (Special Interest Groups, or SIGs) where members meet to share common computer interests. The group's monthly Main Meeting takes place at Calvary Baptist Church, 28924 Ruus Road, Hayward, at 7:30 P.M. on the first Friday of each month.

PC Community is dedicated to community service, providing enabling technology to people with special needs, working in the community to obtain computer equipment, and working with other computer groups to help people extend their lives through computer technology.

PC Community has a Web site at **http://www.pcc.org**.

Membership dues are \$35.00 per year. \$20.00 for educational and seniors(65 and over), and \$45.00 for family per year. Call 510-213-8421 for more information, or write to PC Community at the address on this page.



ICEMAN Consulting Enterprises, Inc.

Thanks to PCC Member **Chris Yager**, ICEMAN Consulting Enterprises, Inc., for printing PCCNews.
 iceman@prado.com - (510) 317-5900



PCC is a member of the Association of Personal Computer User Groups (APCUG)

PCC Announcements

O'Reilly - Books and Media

Review a Book: Review an O'Reilly book and get published in the PCC Newsletter and on the PCC Web Site. Find a book that interests you at www.oreilly.com, e-mail me the name of the book and ISBN so I can order it for you. PCC requires a deposit from you

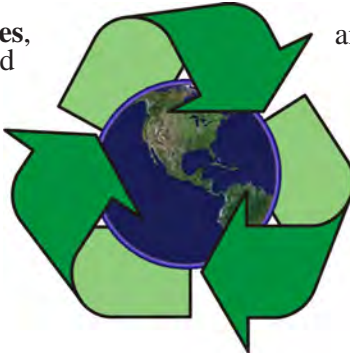


in the amount of the User Group price, a 35% discount. You have 60 days to complete the review, at which time the deposit is refunded and you keep the book.

Elsie Smith - PCC UG Representative to O'Reilly
lcms@pacbell.net or 510-545-2077

PCC Recycle Program is Back, Bigger and Better!

Your used **toner cartridges**, old **cell phones**, used **inkjet cartridges**, old **PDA's** and defunct **iPods** are valuable. Don't toss them in your trash to be used as landfill. They are worth something to PCC and other groups, either in the form of exchange or as discount on products at some local retailers. This not only helps PCC, but also helps our community. You can drop



any of these items off at our Clubhouse or at a Main Meeting. Do your part for PCC and your community! Keep the environment clean by taking a few extra moments to recycle these items with PCC.

contact:
Chuck Horner
churck@comcast.net
510-589-9677

Directions to the PCC Main Meeting

From All Directions: take 880 to the Tennyson Road exit in Hayward. Take the exit toward the hills. Proceed northeast on Tennyson Rd. about 0.7 mile to the 5th stoplight. This will be Ruus Road.

Turn right on Ruus Road and proceed southeast for about 0.4 mile. Look for Calvary Baptist Church on your left.

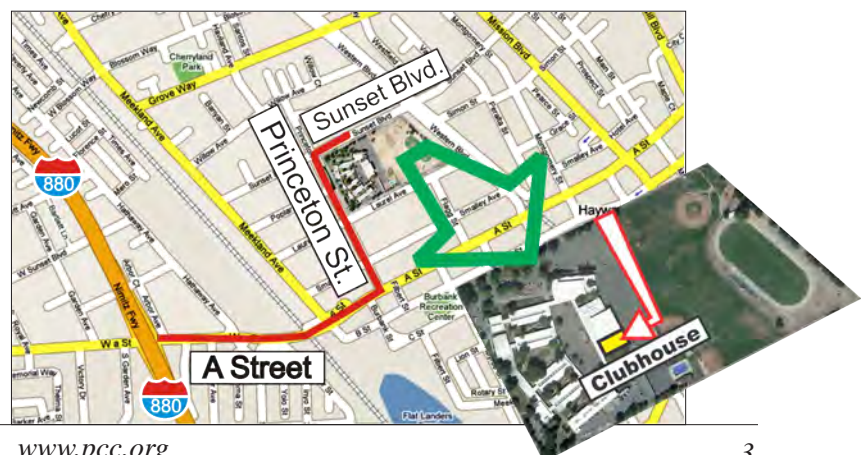
Turn left into the driveway into the parking lot. Parking is available anywhere from the driveway to the back of the lot.

Look for the PCC signs.



Directions to The PCC Clubhouse

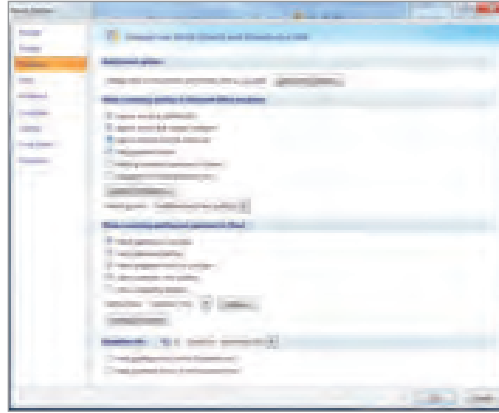
From 880: take the A St. exit East (toward the hills). Immediately after crossing the overpass, turn left at the light onto Princeton. Go straight ahead to Sunset Ave, then turn right. After half a block, turn right into the driveway where the playing field meets the parking lot. Drive all the way back past two fences. When facing the Gym, the clubhouse entrance is on the left side.



Microsoft Word 2007

Question: Why does Word 2007 flag URLs as misspelled? Can I stop that?

Answer: We take URLs (Web addresses) for granted, but tools like Microsoft Word 2007 will often show those Web addresses as misspelled words. People who work with a lot of URLs in documents can find this spell-checking characteristic annoying. You can change the way that Word 2007 handles Web addresses. In Word, click



Microsoft Word 2007 lets you control many document proofing features, including the way that Word handles Web addresses and file names.

the Office button, click Word Options, and choose Proofing from the left menu. Check the Ignore Internet And File Addresses checkbox and click OK. Now, you should avoid those pesky red underlines each time you type a URL in Word.

USB Hard Drives

Question: Can I run a program from my external USB hard drive, or will the program stutter and crash?

Answer: Most programs are designed to run from an internal hard drive using a fast local interface such as SATA (Serial Advanced Technology Attachment). It is certainly possible to run programs directly from an external USB hard drive, but the USB 2.0 interface may struggle with this type of data traffic. Also, other USB devices can

compete for USB bandwidth. This means it's impossible to tell just how well any given program will work from a USB drive. For example, simple utilities (such as a virus checker) may launch and run perfectly, while other programs (such as games or storage-intensive programs) may show a noticeable performance hit.

USB 3.0 offers faster bandwidth, but there aren't as many PCs and devices that support the new standard (yet).

Hard Drive Space

Question: I want to free up hard drive space without deleting any data. Is that possible?

Answer: Windows 7 lets you compress the contents of a hard drive. This saves space and lets you fit more files and programs on the drive. To start compression, click Start and Computer. Highlight the drive that you'd like to compress and click Properties. Select the General tab in the Disk Properties window. Locate the Compress This Drive To Save Disk Space box, check it, and click Apply. Windows will start compressing the drive.

It may take substantial time (perhaps several hours) to complete the compression process; it

depends on the size of the drive and the content that needs to be compressed. Also, some files compress better than others. For example, text files may compress extremely well, while most image files may compress little (if at all). So, it's impossible to predict just how much drive space you'll gain by implementing compression.

Compression is quite safe (although compressed files may be difficult to retrieve if your hard drive experiences problems), but compressed content has to be decompressed as it's read from drive into memory, and then re-compressed as it's written back to drive. This added layer of compression can slow your PC's performance.

Third-Generation Amazon.com Kindle

A New World Of Words

Andrew Leibman

Send your comments to
andrew@smartcomputing.com

I was an ebook skeptic. In my book (Kindle version not available), if it didn't connect to Netflix, it wasn't a real gadget. But then my wife got a third-generation Kindle. Two weeks later, I was reading Frank Herbert's "Dune" on my own Kindle 3G. It's difficult to pinpoint the moment I went from "ebook readers are dumb," to "I want one."

A big part of it was the screen. The e-ink (electronic ink) screen on the Kindle, and other ebook readers for that matter, is not backlit like the LCDs of PC monitors and tablet PCs. The Kindle's screen uses reflected light to illuminate text and images, just like old-fashioned books and newspaper. You can't read a Kindle in a perfectly dark room, but you can read it in direct sunlight. (Try that with your iPad.) Another advantage of e-ink is that the screen only requires a momentary pulse of energy to display a new page. An ebook reader can effectively display the same page for weeks on end without depleting the battery. The backlit LCD of other devices is easily the biggest burden

on the battery, but the Kindle boasts a month's worth of ebook reading on a single charge.

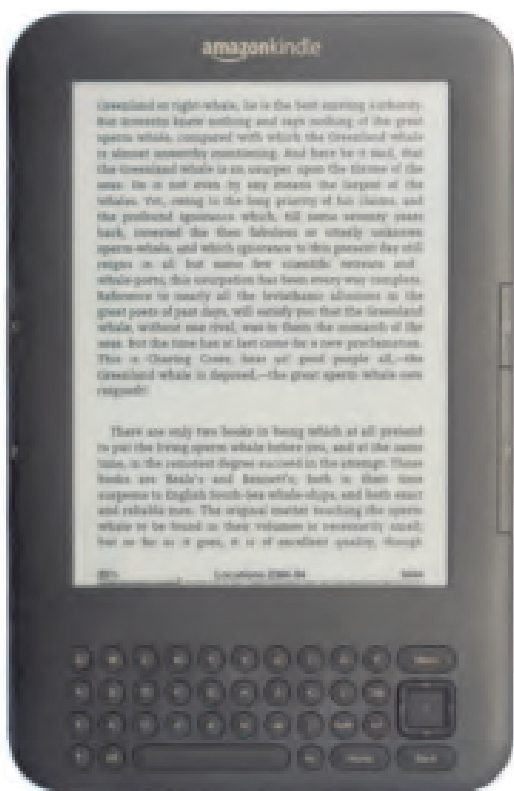
The latest Kindle has a lot of extras. The Kindle Wi-Fi lets you connect to a Wi-Fi network, browse Amazon.com's catalog, purchase books, and then download them directly to the device without a physical connection to a PC, and in less than a minute. The 3G version does the same, but with free 3G access when Wi-Fi is unavailable. With a built-in Web browser, MP3

music player, and support for apps and games, the Kindle is a lot more than a one-trick pony.

I admit that the Kindle falls short compared to traditional books in a few ways. For instance, I miss covers, not just for the art, but also because there's no way to tell what someone's reading if they have a Kindle. You just have to ask. Also, the Kindle navigation features don't translate well to large volumes or collections of stories that you don't necessarily read in succession. For instance, when looking up a specific Bible verse, I have to open the menu, access the table of contents, scroll to and select the appropriate book and chapter, and then advance to the verse. That feels like a chore compared to just grabbing a paper Bible and flipping to the right spot. The Kindle also loses some of the character of the original book, especially where a specific typeset was chosen.

Despite these minor quibbles, however, the Kindle improves on traditional books in many ways. My Kindle can hold 3,500 ebooks, but more importantly, it can let me read four or five at a time without needing a bicep-building book belt to haul them around. Highlighting my favorite passages, viewing passages others have highlighted, and changing text sizes are useful features. Plus, Amazon.com's catalog of more than 750,000 ebooks is generally priced a buck or so less than the paperback equivalent. Free ebook repositories such as Project Gutenberg (www.gutenberg.org) also help get you on your way to building a sizeable portable library. To build your library even faster, visit tinyurl.com/cgjqdf and transfer the Magic Catalog (MOBI Edition) to your Kindle. The Magic Catalog shows up as an ebook, but it's actually a list of download hyperlinks to Gutenberg's Kindle-formatted library. Just open it up, search for an ebook that sounds interesting, and click the link. Your Kindle automatically launches the browser, downloads the ebook, and drops it into your library.

The Kindle has definitely turned this on-again off-again bookworm back onto the lush world of literature. Sorry Netflix, but the book is always better than the movie. And the only thing better than the book is being able to carry around all six novels in a series, as well as numerous prequels. ■



Kindle
\$139.99 (Wi-Fi only);
\$189.99 (Wi-Fi plus 3G)
Amazon.com
(866) 216-1072
www.amazon.com

Reprinted with permission from SmartComputing. Visit <http://www.smartcomputing.com/groups> to see what Smart Computing can do for you and your user group.

Reprinted with permission from SmartComputing. Visit <http://www.smartcomputing.com/groups> to see what Smart Computing can do for you and your user group.

Tech Talk

Answers to users' most common questions about **Hard Drives**



In this photo of a WD (www.wdc.com) hard drive's internal components, you can see its magnetic platters and the armature that moves its read/write heads back and forth across the disks.

Drives that spin their hard disks at a higher speed generally provide better performance.

Q What is a hard drive?

A hard disk drive stores data in tiny magnetic regions on spinning aluminum or glass platters. The drive uses a swinging armature to move read/write heads across the surfaces of the disks, not quite touching them.

A hard disk drive is the most common type of mass storage device used in computers. Unlike RAM, it “remembers” data even when the PC is turned off, including the OS (operating system), such as Windows; applications, such as the Firefox browser; and user data, such as digital photos and text documents.

Q How much can a hard drive store?

Today's 3.5-inch desktop drives—the 3.5-inch part refers to the approximate diameter of their platters—can store up to 3TB (terabytes; approximately 3,000GB). Laptop drives, called 2.5-inch drives, are physically smaller and can hold only 1TB or less. A 3TB drive can store roughly 1 million photos, 600,000 songs, or 300 hours of high-definition video.

Q Why do hard drives have less capacity than advertised?

Once you connect a hard drive to your PC and prepare it for use (such as by initializing, partitioning, and formatting it with a drive letter such as C:), you'll probably find that its usable capacity is several percentage points less than the drive's advertised amount of storage space.

The main reason for this is that a terabyte is actually 1,024GB, not 1,000, just as a gigabyte is actually 1,024MB, and so on. Hard drive vendors market their drives using the rounded (and numerically lower) figures, with the result that a 1.5TB drive actually holds a little less.

Q How does a hard drive's speed affect my computing experience?

Quite a lot, actually. It might surprise you to learn just how much PC time you spend waiting for data to be read from or written to the hard drive during bootup, shutdown, application loading, and virus scanning. In fact, installing a faster processor and additional RAM will make little difference to performance if the bottleneck is actually a slow hard drive.

Set a defragmentation utility to run automatically. This will speed up drive accesses by keeping large files intact on the platters instead of being stored in bits and pieces around the disks. Also, when you're ready to buy a new drive, buy a fast one.

Q If I want to buy a fast hard drive, what should I look for?

Drives that spin their hard disks at a higher speed generally provide better performance. For example, a 10,000rpm desktop drive can outperform most 7,200rpm units, while a 7,200rpm notebook drive often bests 5,400 or 5,900rpm laptop models. (If your laptop is several years old, it may require a 44-pin IDE [Integrated Drive Electronics] drive instead of a more modern SATA [Serial Advanced

Technology Attachment] drive with L-shaped connectors.)

Also, a drive with a bigger cache, such as 64MB instead of 32MB, can sometimes supply extra speed. The cache temporarily stores a copy of recently accessed data in case the computer asks for it again shortly after. If the requested data is still in the cache, the drive can resend it without waiting for it to be read from the platters. Cache memory is volatile, however, and loses its data when the PC shuts down. A faster alternative to a new hard drive is an SSD (solid-state drive).

Q What is an SSD?

This increasingly popular mass storage device is based on flash memory, albeit a faster type than the chips used in USB flash memory drives. Flash is nonvolatile, like a hard drive, so it retains data when powered down. Usually sold in a 2.5-inch form factor, an SSD can radically speed up operations, such as bootup, that involve reads and writes of many small files. This happens largely because flash memory doesn't have to wait for a read/write head to travel to a certain point on a rotating platter as does a hard drive. Current generations of SSDs also handily beat hard drives at reads and writes of large files. They also run silently on less power than hard drives, and they're less fragile.

SSDs' major drawback is their high cost per gigabyte, although prices are falling. Ninety dollars will buy you a 2TB hard drive, but only a 64GB SSD (with a rebate). Thus many users install an OS and apps on a modest-sized SSD, and save personal files on a big, economical hard drive. An alternative to this is a hybrid drive.

Q What is a hybrid drive?

A hybrid drive is a hard drive with a small amount of SSD-type flash

memory on board. By employing algorithms to store frequently accessed files in 4GB or so of nonvolatile flash, a hybrid drive can shorten boot and shutdown times, load apps more quickly, and make the PC feel perkier. A hybrid can't entirely match the performance of a full SSD, but it comes close, and it does boast hundreds more gigabytes of storage space.

Early hybrids relied on the OS—specifically, Windows Vista—to determine which bits of data to cache in their flash memory. Because they didn't deliver much more performance for the money, early hybrids disappeared from the market. Vista's lack of popularity didn't help, either. Fortunately, current hybrid drives are self-sufficient, so they can pep up a computer no matter what OS it runs. Recent hybrids' performance is also well worth their small price premium over rank-and-file hard drives.

3.5-inch external drives, 2.5-inch models are considered tough enough to be portable. Also, most 2.5-inch drives are able to get both power and data through a single USB cable.

Q What is an Advanced Format drive?

Some new hard drives store data in sectors (virtual divisions) 4KB in size, eight times larger than the previous 512-byte standard. This Advanced Format system makes possible capacities beyond 2TB. Also, a 4KB sector has more room for error correction code, allowing for the use of better algorithms to prevent data corruption.

When formatted with a supportive OS, such as Windows 7, an Advanced Format drive can provide more speed, data reliability, and usable storage space than a traditional drive of the same capacity. Note that a drive



Zalman's S-Series of SSDs (\$79.99 to \$229.99; www.zalman.com) gives you some relatively economical options for speeding up program loads, OS bootup/shutdown, video processing, and more.

Q What is an external drive?

An external drive comes encased in an enclosure and preformatted to receive data such as backups. They most commonly connect to a computer via a USB 2.0 cable, although some support Firewire or the much faster USB 3.0 or eSATA (external SATA) interfaces. Unlike

larger than 2.19TB may require an adapter card to access all of its storage space, namely an adapter with a drive controller that supports 64-bit LBA (logical block addressing). And if you plan to install an OS on the new drive, you may need to buy a new motherboard with EFI (Extensible Firmware Interface) support. ■

BY MARTY SEMS



He used to feel this way about his TV. Love is in the air.

Clubhouse Information

Due to the change in the Hayward Adult School (HAS) Custodian hours, the Clubhouse will remain open from 4:00 PM to 7:00 PM on **Wednesday Evenings**.

On **Saturdays** the Clubhouse will now open at 8:30 AM and close at 1:00 PM. When Hayward Adult School has a three-day weekend, the Clubhouse will be **closed**.

The monthly **“Cook Outs”** will be held on the first open Saturday of each month.

Clubhouse Phone Number is 510-537-4138. Anyone who needs to contact the Clubhouse may do so during the above listed hours when someone is there to take the call.

Check this section of the Newsletter for any future changes or information regarding the Clubhouse, or check PCC’s Web site at www.pcc.org.

Door Prize Donations

O’Reilly Media generously donates the books that are our door prizes. Go to www.oreilly.com and pick books you’d like to see on our door prize table. You might win one you choose. E-mail the names and ISBN of the books you want me to request from O’Reilly.

Elsie Smith
lcms@pacbell.net

Hey You! Join PCC!

If you’re reading this newsletter because it was passed on to you by a friend, you’re getting an idea of what a great group this is. Why not join PCC and get more from your computer? Apply at www.pcc.org or contact:

Jan Fagerholm
pcc4me@gmail.com
 510-213-8421

Membership Dues

As of January 1, 2007, the following changes went into effect:

- Regular.....\$35.00
- Family (same household).....\$45.00
- Educational, Seniors.....\$20.00
- Corporate (maximum 5 memberships).....\$100.00

Remember, you can always pay your dues by mail. Make a check payable to PC Community in the amount listed above to:

PC Community
 P.O. Box 55513
 Hayward, CA 94545-0513

Dues Expiring This Month!

The following members dues expire this month:

- | | |
|-------------------------|--------------------------|
| Delmo Della-Dora | Don Odle |
| Charles Dormann | Verne Perry |
| Prentice Hayes | Anna Maria Robles |
| Chun Lee | Derrick Ross |
| Yokie K. Louie | Don Trimble |
| Robin Mack | |

Special Interest Group Meetings



Genealogy

Carl Webb - (510) 351-3335
cwebb531@aol.com
Third Tuesday of the month: 6:30pm



Del Parton - (510) 276-4292
delpa@pacbell.net
Saturday after Main Meeting: 8pm



Jan Fagerholm - (510) 213-8421
pcc4me@gmail.com
Last Saturday of the Month: 2pm



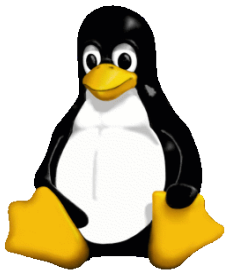
Dan Dolgin - (510) 895-8845
dandolgin7@comcast.net
3rd Monday of the month: 7:30pm
<http://www.pcc.org/mobile>



Chuck Horner - (510) 589-9677
churck@comcast.net
3rd Monday of the month: 7:30pm
<http://www.pcc.org/mobile>



Bud Gallagher - (510) 269-3623
budgall@comcast.net
2nd Saturday of the month: 1pm



The Penguin Partition Linux for Human Beings

by Jan Fagerholm, PCC Penguinista

Unaware to normal human beings, Google has been working on an operating system.

You may be aware that Google has developed many Web technologies that are in common use. An operating system, though, sounds a bit out of their province.

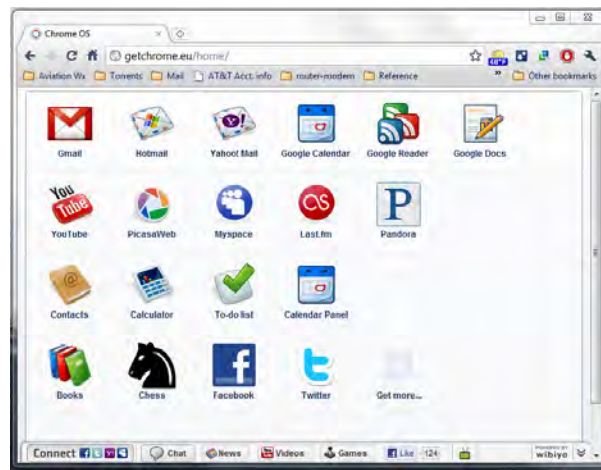
It all ties in with their developments in Cloud computing, where everything you do on the computer is not on your computer, but over the Internet on somebody's Web server. This isn't as peculiar as it sounds, as it makes computer life a lot simpler on many fronts, where all the applications and documents are located on a server that is certainly more reliable than the average PC.

There are advantages, even for the personal user, such as bug fixes and updates that are performed without having to download and install stuff on your computer, and you don't have to worry about equipment failure and data loss, as all your software and data is on a server somewhere where somebody is paid to make sure bug fixes and backups are taken care of for you.

Thus, Google Chrome. That's Chrome the Operating

System, not Chrome the Web browser. The distinction is blurry, though, as the Chrome OS runs entirely inside the Chrome Web browser.

Google Chrome OS has reached RC status, so now you can download it and try it out. Your computer still needs an OS to run the Web browser, so Chrome OS comes



with OpenSUSE 11.3 Linux. Install the whole thing, and the computer comes up in the Chrome browser with icons to start each application.

One of the advantages is immediately obvious: you can create and edit genyoowine Microsoft Office documents without buying MS Office. Microsoft has a Web-based Word, Excel, and other Office apps that run in Chrome OS.

There is a full range of apps including productivity

software, games, and the exploding social networking apps. Chrome OS handles everything you already do in a lean, fast OS.

Of course, it requires a broadband Internet connection to be effective, but its modest hardware requirements lend it to ultra-compact netbooks and tablets. Your next "laptop" could be a Chrome OS device.



PCC Main and Executive Meeting Highlights

Secretary — Bayle Emlein
pcc@ix.netcom.com

Treasurer — Tom Smith
smith-tf@pacbell.net

PCC Board of Directors Meeting Highlights

January 22, 2011

The meeting was called to order at 2:10 PM. Board of Directors members present: Jan Fagerholm, Sally Holt, Elsie Smith, Chuck Horner, Bayle Emlein.

The purpose and sole agenda item for this meeting is to appoint PCC executive officers for 2011.

2011 PCC Executive Committee is as follows:

President:	Chuck Horner
Executive Vice President:	Sally Holt
Treasurer:	Tom Smith
Secretary:	Bayle Emlein
VP Clubhouse:	Sid Jordan
VP Marketing:	Open
VP Membership:	Jan Fagerholm
VP Newsletter:	Elsie Smith
VP Programs:	Open
VP Special Projects:	Bayle Emlein

Non-voting offices will be discussed in the Executive Committee meeting:

Projector Coordinator:
Webmaster:
APCUG Rep:
Network Coordinator:

The meeting was adjourned at 2:30 PM.

Respectfully submitted
Bayle Emlein, Secretary

Main Meeting Highlights

January 7, 2011

The meeting was called to order at 7:40 PM by VP Membership Jan Fagerholm, substituting for President Chuck Horner, who was away. Jan advised silencing of phones, explained Internet access, and welcomed first-time attendees.

SIG Announcements:

The Mobile SIG is on sabbatical.

The Windows 7 SIG is cancelled for January due to scheduling conflicts

The Spectacular Linux SIG will be held on the last Saturday of the month and will probably focus on Linux Mint 10 and Google Chrome OS.

The Hardware SIG will meet the Saturday after the Main Meeting at 8:00 PM at the Smith's.

Presentation:

Jan Fagerholm showed how your computer can deal with a tough economy with the best in free software for Windows. Software included the following:

Utilities

Advanced System Care 3 – <http://www.iobit.com/advancedsystemcareper.html> – anti-malware, reg cleaner, disk cleaner, security, disk defrag (Smart Defrag 2)

Avast! Antivirus – <http://www.avast.com> – antivirus, Internet security. Requires annual registration.

AVG Free Antivirus – <http://free.avg.com> – antivirus, Internet security.

MalwareBytes Anti-malware – <http://www.malwarebytes.org> – anti-malware, anti-spyware.

Graphical Applications

The GIMP – <http://www.gimp.org> – graphical bitmap editor for Windows, Mac, and Linux.

Bitmap vs. vector. GIMP vs. photo organizers.

Picasa 3 - <http://www.google.com/picasa/> – photo organizer and editor. Upload photos to Web site for sharing.

Internet

Firefox – <http://www.mozilla.com/en-US/firefox> – Web browser.

If you use IE7 or older, you need to upgrade for security.

Thunderbird – <http://www.mozillamessaging.com/en-US/thunderbird/> – full featured e-mail client for Windows, Mac, Linux. (client-sides Google and other e-mail accounts).

Google Chrome – <http://www.google.com/chrome/intl/>

Continued on page 11

Main Meeting Highlights

Continued from page 10

en/landing_chrome.html?hl=en – faster way to browse.
Brief tour for those unfamiliar.

<http://www.chromium.org> – for chromium projects including ChromeOS.

Office Suites

OpenOffice 3 – <http://www.openoffice.org> – full featured office suite using open source XML standard for documents.

XML vs. DocX (M\$) format.

Demo open-close-save M\$ Office docs.

IBM/Lotus Symphony 3 – <http://symphony.lotus.com/software/lotus/symphony/home.nsf/home> – browser-based basic office suite with M\$ Office file compatibility. Though browser-based, does not require cloud computing.

Google Docs – <http://docs.google.com> – Web-oriented document maker. Demonstrates cloud-style computing.

Refreshment Break:

The refreshment break was taken at 9:50 PM.

The meeting was adjourned at 10:15 PM.

The next meeting will take place at the same location on February 4th, 2011.

Respectfully submitted,

Jan Fagerholm, VP Membership
substituting for Bayle Emlein, Secretary

Executive Committee Meeting Highlights

January 22, 2011

The meeting was called to order at 2:31 PM by President Chuck Horner.

Members present: Bayle Emlein, Jan Fagerholm,, Chuck Horner, Sid Jordan, Elsie Smith, Tom Smith. Absent: Diane George.

The minutes of the November meeting were approved as read.

Old Business: The brochure and cards have been tabled until we have an official VP Marketing.

President's Report - Chuck Horner: We need marketing and programs help.

Executive Vice President - Position open.

Treasurer - Tom Smith: As of January 22, 2011

Tom pointed out that we lost \$2,229.55 this year, which continues a general trend. The Clubhouse has been a big source of revenue.

Checking Account	\$2,049.76
CD	\$3,370.71
Total	\$5,420.47

Declining membership is the main cause for declining revenues. Chuck pointed out that we need better outreach to the community. Chuck will send the card and brochure to Paul Cooper to follow up.

Secretary - Bayle Emlein: Nothing special to report.

VP Clubhouse - Sid Jordan: There seems to be a lapse between people renewing and their getting their newsletter. It is proposed that people renew before their dues expire, and not wait until after the end of their membership before renewing.

People need to check the Web site for late-breaking changes in the schedule. People can also call ahead to the Clubhouse to be sure of hours.

VP Marketing – Position open.

VP Membership - Jan Fagerholm: Member count as of January 22, 2011:

Type	Number	Percent
Regular	35	47.30
Senior	34	45.95
Student	1	1.35
Associate	4	5.41
Total	74	

VP Newsletter - Elsie Smith: Submission Deadline:

January 22nd, Saturday midnight, February Newsletter
February 19th, Saturday midnight, March Newsletter
March 19th, Saturday midnight, April Newsletter

Programs - February: Stay tuned.

VP Special Projects - Bayle Emlein: Nothing to report.

Webmaster - Diane George: If there are any changes to the website, let Diane know so she can update it.

Calendar: See the Web site for the latest updates and changes in SIG meetings. Remember to check the Web site before going to the Clubhouse.

Fund Raiser: Jabra wireless visor kit

New Business: Congratulations to the 2011 Executive Committee. See list in Board of Directors' Meeting.

Date and Time of Next Meeting: Saturday, February 19, 2011 at 2:00 PM, 28924 Ruus Road, Hayward.

The Southwest Computer Conference will take place the first weekend of June. All are welcome.



The meeting was adjourned at 3:35 PM.

Respectfully submitted,
Bayle Emlein, Secretary

PC Community
P.O. Box 55513
Hayward, CA 94545-0513



February 2011

Sunday	Monday	Tuesday	Wednesday	Thursday	Friday	Saturday	
See Page 8 for Clubhouse information.	1	2	3	4	5		
		→ 4 pm-7 pm Clubhouse Open		7:30 pm Main Meeting	→ 8:30am-1pm Clubhouse Open → Clubhouse Cookout 8 pm-Hardware SIG		
6	7	8	9	10	11	12	
		→ 4 pm-7 pm Clubhouse Open			→ 8:30am-1pm Clubhouse Open	1 pm-Windows 7 SIG Abraham Lincoln's Birthday 	
13	14	15	16	17	18	19	
	Valentine's Day	6:30 pm- Genealogy SIG	→ 4 pm-7 pm Clubhouse Open		→ Clubhouse Closed	2 pm-Exec. Committee Mtg.	
20	21	22	23	24	25	26	
	7:30 pm- Mobile Computing SIG President's Day	 Washington's Birthday	→ 4 pm-7 pm Clubhouse Open		→ 8:30am-1pm Clubhouse Open	2 pm-Linux SIG	
27	28	Check the calendar at www.pcc.org for up-to- date information!				See Page 9 for SIG Meeting information.	

The March 2011 Main Meeting will be at 28924 Ruus Road, Hayward CA, on **March 4, 2011** at 7:30 P.M.