

## Convention News and E-Books Galore

Conventions are a big part of the personal technology community. It's where you go to find out the latest and greatest of what's going on with personal devices, get some hands-on with the new stuff, and yeah, maybe schmooze a little bit.

Internet, making it possible for attendees to see and be involved with many more presentations. On the personal device front, Jan Fagerholm will offer an exploration of what's new and cool in the e-book world. Jan is an avid reader, but has only recently joined the world of e-books through personal readers.



Southwest Technology & Computer Conference

Many PCC members take part in the larger world of personal devices.



E-book devices have not faded with the onset of tablet computers; they have actually increased in sales since tablet

This month, a report on the Southwest Technology and Computer Conference from our intrepid PCC reporter Bayle Emlein.

devices were introduced. Jan will show you why this happened, and explain some of the e-book devices available these days.

Bayle will present the news from the vendors attending the Conference, as well as the Conference events themselves. Something new this year is the ability for attendees to participate in individual technology sessions via the

As always, there'll be good food, good friends, and good fun all around. See you at the Main Meeting!

### Raffle!

This month, Team Color Turn 32GB USB 2.0 Flash Drive (Brown) Model TG032GE902CX. Users can store documents, media files, digital photos, and personal mails with its USB2.0 high-speed transfer performance. The appearance and size are ergonomic and modern. With its metallic swappable design, the consumer will never lose the cap again. Color Turn is designed for the consumer who is looking for a large capacity USB drive that does not look like any other on the market. AND, it's YOURS for the price of a ticket.



Tickets are \$5 each, available where you sign in. Need not be present to win.

### What's Inside:

Newsletter Information..... 2	Map & Directions to Main Meeting..... 3	SIG Meetings- Information..... 9
PC Community Officers..... 2	PCC Clubhouse ..... 3	Penguin Partition..... 9
About PC Community ..... 2	The State Of Smart Phones ..... 4	Main & Exec. Meeting Minutes.....10
PCC Announcements..... 3	How To Install An SSD ..... 6	PCC Events Calendar.....12
	Advertisements..... 8	

# About PC Community



**EDITOR**  
**Elsie Smith**  
 lcms@pacbell.net

**Associate Editor: Jan Fagerholm**

Online Editor: Diane George

Contributors: Bayle Emlein, Jan Fagerholm, Diane George, Chuck Horner and Elsie Smith.

Deadline: Copy must be submitted no later than the second Saturday prior to the Main Meeting. Check the Newsletter calendar for the date. Submissions should be made by e-mail to the Editor, **lcms@pacbell.net**. Advertising rates are available from the Editor.

Contents © 2012 PC Community, except as noted. Permission for reproduction in whole or in part is granted to other computer user groups for internal, non-profit use, provided credit is given to PC Community and to the authors of the material.



Adobe InDesign CS2 is used to publish  
 PCC News

## PCC Officers and Staff

- President — Chuck Horner**  
 churck@comcast.net (510) 589-9677
- Executive Vice President — Sally Holt**  
 nole62@pacbell.net (510) 785-3593
- Treasurer — Tom Smith**  
 smith-tf@pacbell.net (510) 545-2077
- Secretary — Bayle Emlein**  
 pcc@ix.netcom.com (510) 652-1726
- VP Clubhouse — Sidney Jordan**  
 sjordan321@aol.com (510) 886-8188
- VP Marketing — New VP Needed**  
 you@righthere.com (510) 123-4567
- VP Membership — Jan Fagerholm**  
 pcc4me@gmail.com (510) 213-8421
- VP Newsletter — Elsie Smith**  
 lcms@pacbell.net (510) 545-2077
- VP Programs — New VP Needed**  
 you@righthere.com (510) 123-4567
- VP Special Projects — Bayle Emlein**  
 pcc@ix.netcom.com (510) 652-1726
- Webmaster — Diane George**  
 digeorge@sbcglobal.net (510) 538-2449
- APCUG Representative — Diane George**  
 digeorge@sbcglobal.net (510) 538-2449
- Network Coordinator — Paul Cooper**  
 paulc2553@yahoo.com (510) 733-2613
- Projector Coordinator — Jan Fagerholm**  
 pcc4me@gmail.com (510) 213-8421

## Board of Directors

- Bayle Emlein**  
 pcc@ix.netcom.com (510) 652-1726
- Jan Fagerholm**  
 pcc4me@gmail.com (510) 213-8421
- Sally Holt**  
 nole62@pacbell.net (510) 785-3593
- Chuck Horner**  
 churck@comcast.net (510) 589-9677
- Elsie Smith**  
 lcms@pacbell.net (510) 545-2077

## Clubhouse Information

Please check page 3 for information regarding the Clubhouse. Communication with the Clubhouse should be directed to PC Community, P.O. Box 55513, Hayward, CA 94545-0512.

PC Community is a computer users group for people who wish to expand their knowledge and experience of personal computers and software. This is accomplished through monthly general meetings of the full membership where major industry vendors present information, and through smaller focus groups (Special Interest Groups, or SIGs) where members meet to share common computer interests. The group's monthly Main Meeting takes place at Calvary Baptist Church, 28924 Ruus Road, Hayward, at 7:30 P.M. on the first Friday of each month.

PC Community is dedicated to community service, providing enabling technology to people with special needs, working in the community to obtain computer equipment, and working with other computer groups to help people extend their lives through computer technology.

PC Community has a Web site at <http://www.pcc.org>.

Membership dues are \$35.00 per year. \$20.00 for educational and seniors (65 and over), and \$45.00 for family per year. Call 510-213-8421 for more information, or write to PC Community at the address on this page.



**ICEMAN  
 Consulting  
 Enterprises,  
 Inc.**

Thanks to PCC Member **Chris Yager**,  
 ICEMAN Consulting Enterprises, Inc.,  
 for printing PCCNews.  
 iceman@prado.com - (510) 317-5900



PCC is a member of the Association  
 of Personal Computer User Groups  
 (APCUG)

---

# PCC Announcements

## O'Reilly - Books and Media

---

**Review a Book:** Review an O'Reilly book and get published in the PCC Newsletter and on the PCC Web Site. Find a book that interests you at [www.oreilly.com](http://www.oreilly.com), e-mail me the name of the book and ISBN so I can order it for you. PCC requires a deposit from you



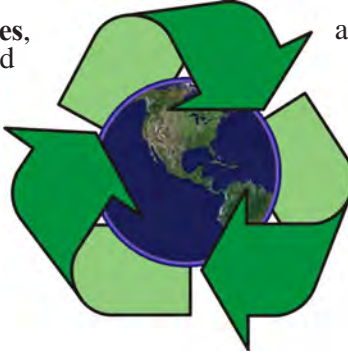
in the amount of the User Group price, a 35% discount. You have 60 days to complete the review, at which time the deposit is refunded and you keep the book.

Elsie Smith - PCC UG Representative to O'Reilly  
[lcms@pacbell.net](mailto:lcms@pacbell.net) or 510-545-2077

---

## PCC Recycle Program is Back, Bigger and Better!

Your used **toner cartridges**, old **cell phones**, used **inkjet cartridges**, old **PDA's** and defunct **iPods** are valuable. Don't toss them in your trash to be used as landfill. They are worth something to PCC and other groups, either in the form of exchange or as discount on products at some local retailers. This not only helps PCC, but also helps our community. You can drop



any of these items off at a Main Meeting or an EC Meeting. Do your part for PCC and your community! Keep the environment clean by taking a few extra moments to recycle these items with PCC.

contact:  
**Chuck Horner**  
[churchk@comcast.net](mailto:churchk@comcast.net)  
510-589-9677

---

## Directions to the PCC Main Meeting

**From All Directions:** take 880 to the Tennyson Road exit in Hayward. Take the exit toward the hills. Proceed northeast on Tennyson Rd. about 0.7 mile to the 5th stoplight. This will be Ruus Road.

Turn right on Ruus Road and proceed southeast for about 0.4 mile. Look for Calvary Baptist Church on your left.

Turn left into the driveway into the parking lot. Parking is available anywhere from the driveway to the back of the lot.

Look for the PCC signs.



---

## PCC Clubhouse Seeking House!

PCC's Clubhouse is temporarily without a -- house. With extraordinary effort, Clubhouse VP **Sid Jordan** and clubhouse regulars **Tony Cozzette, Don Feist, Bruce Hevelin, Charles Landsmerer, Bob McGeary, Del Parton, Ted Rosaro, AC Robinson, and Michael Wong** cleared out years of accumulation and took it to the recycle center for cash. Their efforts added \$800 to PCC's finances.

That's the good news. The bad news is that the Clubhouse is temporarily homeless. We are working on a temporary

location from which the refurbishing activities can continue, but we are still seeking a larger facility from which the Clubhouse's full set of activities can continue. We are setting up a contact phone number where you can call and find out about Clubhouse progress.

If you know of a facility that can house our Clubhouse, (think of the old Clubhouse for size) contact anyone on the Executive Committee and let them know. Contact information for the E.C. is on page 2 of this Newsletter, or go to [www.pcc.org](http://www.pcc.org) and click on Contact Us.

---

# The State Of Smartphones

Copyright by Sandhills Publishing Company 2011. All rights reserved. Visit <http://www.smartcomputing.com>



Courtesy of Apple

The iPhone 4S runs iOS 5, the latest version of Apple's smartphone software.

Smartphones are exploding in popularity. According to In-Stat, smartphones accounted for less than 20% of total handsets in 2010 but will account for 43% of all mobile phones by 2015. IDC predicts that smartphones will experience double-digit growth in the coming years as they snatch market share from feature phones.

## Smartphone vs. Feature Phone

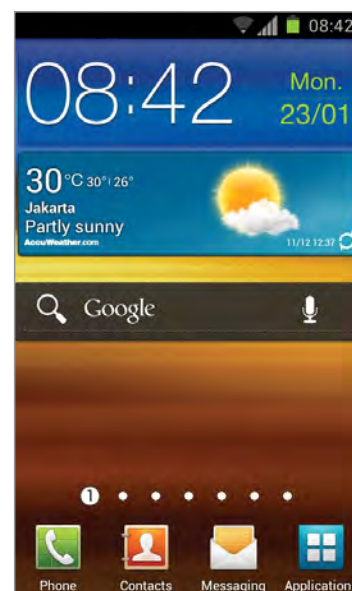
The biggest distinction between a smartphone and every other mobile phone is the ability of that phone to run an advanced mobile platform, such as Apple's iOS, Google's Android, Microsoft's Windows Phone 7, RIM's BlackBerry OS, and to a lesser extent, Nokia's Symbian, and the Linux-based Maemo and MeeGo. These phones are

designed to let users run third-party software, typically downloaded from a platform-exclusive applications marketplace. They also support Web connectivity, email, photo and video capture, digital compass and GPS-based navigation, and more.

## Who Makes 'Em?

Although the smartphone user experience is mostly defined by the platform, it is important to note that smartphone manufacturers do have some impact on what you see and feel with regard to the device.

Apple and RIM (Research In Motion) don't just make smartphone OSes, they also manufacture iOS-based iPhones and BlackBerry



Samsung's TouchWiz user interface elements differ from that of stock Android.

OS-based BlackBerrys, respectively. For instance, every iPhone 4S sold around the world is, from a hardware and software standpoint, identical. With each new OS iteration, both Apple and RIM tend to launch new smartphones that show off the latest features. Both firms allow a handful of phones from the previous OS revision upgrade, but the older models tend to get left out.

Google and Microsoft, on the other hand, rely on third-party hardware manufacturers to create devices that will run the respective Android and Windows Phone 7 operating systems. Companies such as HTC, Samsung, LG, Motorola, and Nokia create hardware and work with the carriers (Sprint, AT&T, Verizon Wireless, etc.) to get a version of the target OS installed. At press time, the latest version of Android is 4.0, also called Ice Cream Sandwich. For Windows Phone 7 devices, Mango is the name of the latest update to the platform.

Unlike with BlackBerry and iPhone, Windows Phone 7 and Android phones come in a much wider variety of designs, screen sizes, and features. To make their devices stand out, many of these manufacturers also add software tweaks to give the phones a unique look and feel. For instance, Samsung's phones use the TouchWiz interface and HTC-based phones use the HTC Sense interface.

### Mobile Must-Haves

Among Apple, Google, Microsoft, and RIM, smartphones offer a surprisingly uniform list of specifications, but there are a few features that set them apart. Apple's iPhones are renowned for being intuitive and let users manage and purchase audio and video content using the firm's iTunes software. Similarly, Microsoft's Windows Phone 7 devices use the Zune software to manage and buy content. Microsoft's phones also offer a unique user interface that favors large text and flat icons. One of the best things about Android-based



HTC's Sense user interface is used on a variety of Android-based smartphones from HTC.

devices is the sheer number of models available, from inexpensive to over-the-top. BlackBerrys have a reputation for being extremely business-friendly and having a rock-solid email and messaging scheme. ■

## Smart Business: Nokia Lumia 710

A business-oriented smartphone needs to be more than just a mobile portal to Web and email. The Nokia Lumia 710 does that, but it also makes you a master of your Microsoft Office documents with built-in Word and Excel editing. Bing Voice Search makes finding what you want nearby a cinch, including mapped directions, phone numbers, reviews, and even what the traffic looks like between where you are and where you want to be. The intuitive People Hub lets you keep in touch with your family, colleagues, and more in one easy-to-use app that incorporates your contacts, social networking updates, and messaging functions into a few information-packed screens.



The Nokia Lumia 710 makes finding people and places easy and intuitive.

# How To Install An SSD

Copyright by Sandhills Publishing Company 2011. All rights reserved. Visit <http://www.smartcomputing.com>

## Speed Up Your Desktop

Moving from a hard drive to an SSD is a fairly straightforward procedure that you can perform in less than an hour.

**H**ere, we'll cover the steps you'll need to take to install an SSD in a desktop PC.

### Physical Installation

Start by turning your PC off and removing the left side panel. Then, locate the hard drive cage and look for a way to secure the SSD into the system. Most new desktop cases feature plastic slide-out trays that can hold either a 2.5-inch (traditional SSD size) or 3.5-inch (traditional hard drive size) drive, but if your PC is more than a year old, it's unlikely it was built to natively hold the 2.5-inch SSD form factor.

Fortunately, there are a number of ways you can mount an SSD into a 3.5-inch bay. You can invest in a 3.5-inch to 2.5-inch adapter bracket that provides holes to securely mount your SSD; VELCRO's Sticky Back tape (\$29.99; [www.velcro.com](http://www.velcro.com)) is another option. SSDs have no moving parts and don't need to be screwed into place like a traditional hard drive, so you could just apply the VELCRO tape to the 3.5-inch bay and the bottom of the SSD to secure the drive.



⚠ You'll need to connect SATA data and power cables to the back of your SSD.

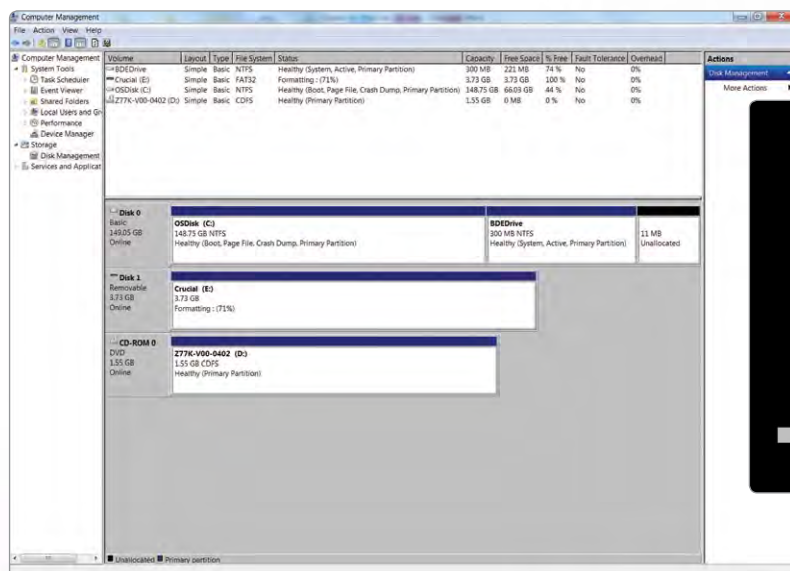
### Attach

Once you've placed the SSD inside your case, you'll need to connect a SATA (Serial Advanced Technology Attachment) data cable and a SATA power cable to the SSD. Your power supply should have a few unused L-shaped SATA power cables that you can run to the power connector on the back of the SSD.

When connecting the SATA data cable, you'll want to attach it to the fastest SATA port on your motherboard. Most new PCs provide you with both 6Gbps (also known as SATA 3) and 3Gbps (also known as SATA 2) SATA ports. SSDs work faster when connected via a 6Gbps SATA port, because they are capable of operating at the faster SATA speeds. Examine the manual for your



This SATA cable indicates that it supports 6Gbps transfer speeds.



When you boot up from the optical drive, Windows will load the files for installation.



Before you install anything on the SSD, you should format the drive.

desktop or motherboard to learn about the location and speed of available SATA ports. If your desktop does offer a 6Gbps SATA port, you'll also want to ensure that you run a 6Gbps SATA cable (often the cable features a SATA 3 label) from the motherboard to the hard drive. Similar to the SATA power cable, you'll run the data cable to the data port on the back of the motherboard.

## Software Installation

With the SSD mounted and connected, you can go ahead and install a fresh copy of Windows onto the drive. Before you install the operating system, however, you'll want to format the drive. To do so in Windows, click the Start button, right-click Computer, and select Manage. Click Disk Management, right-click your SSD, and choose Format. The process will take a few minutes.

Now, you can set up the PC to boot up from your computer's optical drive so that you can install Windows onto the SSD. Note that you'll need a Windows installation disc to perform the installation. To change the PC's boot order, you must enter the BIOS (Basic Input/Output System) by starting the PC and pressing a specific key—typically the DELETE key—at boot-up. Once inside the BIOS, you can use the arrow keys to find the boot options where you can move your optical drive up in the boot order. Save your changes and restart your computer.

## Final Steps

As your PC reboots, you should see a prompt that reads "Press any key to boot from CD or DVD." Press a key and Windows loads its installation utility—assuming that you've inserted the Windows installation disc into the optical drive. Follow the on-screen instructions and select the options for installing Windows on your SSD. ■

## Door Prizes

Congratulations to all the members who won door prizes at the Main Meeting!

### General Drawing:

Acronis True Image.....	Michael Wong
Kroll Ontrack watch.....	Joy Somerville
LG Bluetooth Headset.....	Keith Sammon
CES Open Forum tee shirt.....	Dan Peterson
System Mechanic tee shirt.....	Andrew Tews
United Health Group pedometer.....	John Cordeniz
Water bottle.....	Bayle Emlein
HDMI Key chain/ flashlight.....	Bob Dunn
FM Radio.....	Bill Huston

### Raffle Prize:

8" ViewSonic Digital Photo Frame.....	Bob Kiessling
---------------------------------------	---------------

## Door Prize Donations

O'Reilly Media generously donates the books for our door prizes. Go to [www.oreilly.com](http://www.oreilly.com) and pick books you'd like to see on our door prize table. E-mail the names and ISBN of the books you want me to request.

Elsie Smith  
lcms@pacbell.net

**dominique**  
& co.

HAIR SALON



510.782.7014  
20500 C Hesperian Blvd.  
Hayward, CA 94541

Family and Cosmetic Dentistry  
[www.mycastrovalleydentist.com](http://www.mycastrovalleydentist.com)

Timothy Bennett D.D.S.  
3209 Castro Valley Blvd. Suite #1  
Castro Valley, CA 94546  
Phone (510) 881-0620  
*Naturally Beautiful Smiles*  
[tbennettdentistry@yahoo.com](mailto:tbennettdentistry@yahoo.com)



## CARING PET HOSPITAL

SARUP S. MANGAT, D.V.M.  
605 Greeley Court  
Hayward, CA 94544

Office Hours:  
Mon.-Wed. 8:30 am-6 pm  
Thurs.-Fri. 8 am-6 pm  
Sat. 9 am-2 pm

Telephone: (510) 537-1788  
Fax: (510) 537-3103  
[www.caringpethospital.net](http://www.caringpethospital.net)



## Membership Dues

Regular.....	\$35.00
Family (same household).....	\$45.00
Educational, Seniors.....	\$20.00
Corporate (maximum 5 memberships)...	\$100.00

Make a check payable to PC Community in the amount listed above to:  
PC Community  
P.O. Box 55513  
Hayward, CA 94545-0513

## Dues Expiring This Month!

The following members dues expire this month:

**Walt Buschow**  
**Joel Elloff**  
**Wendy Elloff**  
**Miguel Estrema**  
**Arleen Ong**  
**Ricardo Ribeiro**  
**Andrew Tews**



# Special Interest Group Meetings



**Del Parton** - (510) 276-4292  
delpa@pacbell.net  
Saturday after Main Meeting: 8pm



**Dan Dolgin** - (510) 895-8845  
dandolgin7@comcast.net  
3rd Monday of the month: 7:30pm  
<http://www.pcc.org/mobile>



**David Graham** - (925) 997-9646  
dmgraham98@yahoo.com  
3rd Monday of the month: 7:30pm  
<http://www.pcc.org/mobile>

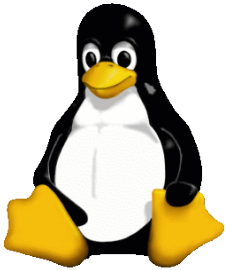


**Bud Gallagher** - (510) 269-3623  
budgall@comcast.net  
2nd Saturday of the month: 1pm

Room for more  
SIGs here-  
start one!



**Jan Fagerholm** - (510) 213-8421  
pcc4me@gmail.com  
Last Saturday of the Month: 2pm



## The Penguin Partition Linux for Human Beings

by Jan Fagerholm, PCC Penguinista

Turbulent times for a peace-seeking penguinista. Gnome moving from version 2 to version 3 has created very mixed responses from Linux distros that based themselves on the Gnome desktop.

Ubuntu, the #2 distro in popularity, jumped the gun on Gnome and released Unity, their own implementation of a New Improved desktop, which is markedly different from Gnome 3 (or anything else, for that matter).

Mint, the #1 distro, followed along more traditional lines and simply adapted the straight Gnome 3 interface alongside their adaptation of the legacy Gnome 2 interface that they termed "Mate", which is Gnome 2 with some compatibility enhancements.

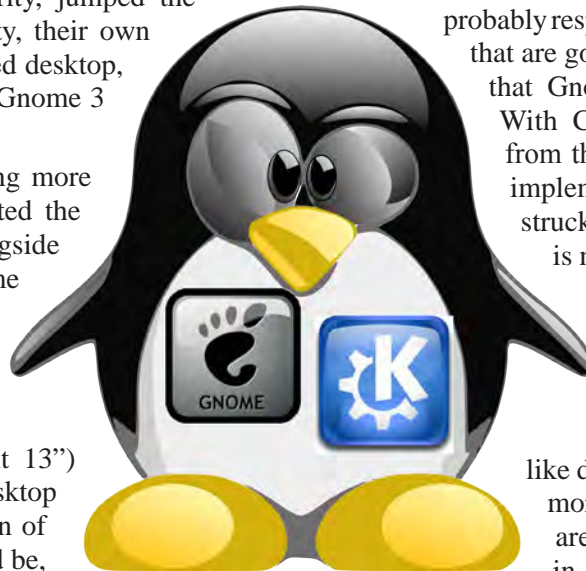
The recent release of Mint Maya (seems they hate to call it "Mint 13") sees a departure from Gnome 3 desktop and replaces it with Mint's version of what they think the desktop should be, something they call Cinnamon. While based on Gnome 3 for the underpinnings, Cinnamon is, in their words, a return to a more "traditional" desktop, with a panel (taskbar) at the bottom and a menu button (start button) at the lower left corner. Visually, this is not much different than Mate, which continues the

same desktop paradigm on top of the previous Gnome 2 underpinnings. Which you choose probably means more to a programmer than to a user, as both use essentially the same graphical metaphor for navigation and tasks. While Mint 12 was arguably the most successful adaptation of Gnome 3's icon-based interface, Mint has probably responded to the many complaints that are going around about the changes that Gnome 3 imposes on the user. With Cinnamon, they have moved from their "refining and smoothing" implementation of Ubuntu and have struck out in "creative" mode, which is neither Gnome 3 nor Ubuntu's Unity interface.

Meanwhile, out of the turbulence, KDE 4 has quietly refined itself into a strong and stable Windows-like desktop, and is being looked at more strongly by Gnome users that are undecided about the changes in the Gnome camp. All major distros offer KDE variants of the

Linux desktop, and now that resource requirements are on a par for the two desktops, KDE gets a second look.

Or, you can go the indecision route and just get a large enough hard drive to run them all. You indecide. . .





# PCC Main and Executive Meeting Highlights



Secretary — Bayle Emlein  
pcc@ix.netcom.com

Treasurer — Tom Smith  
smith-tf@pacbell.net

## Main Meeting Highlights

### June 1, 2012

The meeting was called to order at 7:33 p.m. by President Chuck Horner. Presiding at the Ticket Table, Harold Smith has raffle tickets, door prize tickets, and 3" x 5" cards to write questions for discussion/answers at the end of the Meeting. New and renewing members see Jan. The raffle prize this month is a 8" ViewSonic Digital Picture Frame. Harold Smith would like to retire from the Ticket Table. Chuck asked for a volunteer willing to take over for him. Lee Hunter volunteered. Thank you, Lee.

We still need folks willing to help out coordinating programs and with publicity. Neither asks that you do the job all by your self. See Chuck, Jan, or Bayle if you can help a bit in either of these areas.

### **SIG Announcements:**

The Windows 7 SIG will meet on the second Saturday after the main meeting. Windows Home Server will be the topic of the June 9 meeting. The SIG will start at 1 p.m. at Bud Gallagher's house. Windows Bud noted that the Windows 8 Preview Edition was released yesterday and he does not like it.

The Spectacular Linux SIG meets at 2 p.m. on the last Saturday of the month, June 30. In May they looked at LinuxMint 13, Cinnamon interface. The plan is to look at the Mate interface, unless something more exciting is released in the interim.

As usual, the Hardware SIG will meet 8 p.m. at the Smith's the evening after the Main Meeting. Come to get help with your hardware or learn how to fix someone else's if your world is running smoothly. Be sure to bring all the documentation you can find. Even when it's a hardware problem, software is usually involved. Call the Smith's if you need directions. The phone number is in your Newsletter.

Chuck reports having seen rumors that RIM (Blackberry) may be on its way out. Jan has seen rumors of a new RIM operating system.

**Presentations:** Member Diane George gave a demo of features she likes in Microsoft Word 2010. The Ribbon is

arranged in order of features the typical user is likely to use. Highlighting the ribbon button results in a preview and a brief Help note. You can move the ribbon functions around using the Options button. Learning Essentials, on the Microsoft site, has many tutorials.

Right-click in a document and a menu of relevant choices appears.

Member Bayle Emlein demonstrated some of the features of the newly released WordPerfect X6. Reveal Codes still lead the feature list. Virtually every piece of modern software has context-sensitive right-click menus. The Search function will look for any codes. Keep It Together sets a soft block protect that is sensitive to formatting changes. Make It Fit lets the writer select the number of document pages by easily selecting from several formatting features. The Styles editor makes reformatting titles and headings a single-pass operation. The Typesetting option in the Format menu allows precise location of any character on the page/screen.

Sally Holt brought in a newspaper article reporting that Microsoft announced that anyone who buys a new computer with Windows 7 between June 2 and the end of the year can upgrade to Windows 8 for \$14.95. Several people pointed out that the analogous upgrades to Windows 7 and Vista were free.

Member Jan Fagerholm presented the LibreOffice Writer word processing application. Many of the menus are very similar to Microsoft Word 2003 or earlier. Like the high-price spreads, there are many templates for projects. Oh, did we mention that LibreOffice is libre, as in free and Writer has a much smaller footprint than Word. LibreOffice can be configured to load and save in Office formats (Word, Excel, PowerPoint). One can receive any version of Microsoft Office files, work on them, and send them back without needing the "correct" version of the paid programs or updating compatibility software.

Looking outside the office suites, Scribus is an open source desktop publishing program.

The meeting was adjourned at 9:58 p.m.

Respectfully submitted,  
Bayle Emlein, Secretary

---

## **Executive Committee Meeting Highlights**

---

### **June 16, 2012**

Members present: Diane George, Sally Holt, Bayle Emlein.  
Absent: Jan Fagerholm, Sid Jordan, Chuck Horner, Elsie Smith, Tom Smith.

Without a quorum, a formal meeting was not held.

**President's Report** - Chuck Horner: No report.

**Executive Vice President** – Sally Holt: Nothing special to report.

**Treasurer** - Tom Smith: As of July 1, 2012:

Checking Account	\$1,885.00
Total	\$1,885.00

**Secretary** - Bayle Emlein: Nothing special to report

**VP Clubhouse** - Sid Jordan: Sid reports that there is no Clubhouse news, though they are distributing refurbished computers on a reduced scale.

**VP Marketing** – Position open:

**VP Membership** - Jan Fagerholm: Member count as of June 16, 2012.

Type	Number
Regular	24
Senior	21
Student	2
Associate	2
Total	49

**VP Newsletter** - Elsie Smith:

June 23, 2012, Saturday midnight, July Newsletter submission deadline

July 21, 2012, Saturday midnight, August Newsletter submission deadline

August 25, 2012, Saturday midnight, September Newsletter submission deadline

**VP Special Projects** - Bayle Emlein: Nothing special to report

**Webmaster** - Diane George:

The Web site update has been completed. Diane has updated all members and added the current list of members (as of last month's data) as users. She also figured out a way to send the Newsletter announcement a little more efficiently. More improvements are likely to follow.

**Calendar:** See the Web site for the latest updates and changes in SIG meetings.

The Mobile SIG is meeting, as is the Linux SIG.

### **Programs:**

July: eBooks, Southwest Computer Conference

### **Fund Raiser:**

July: Team Color Turn 32GB USB 2.0 Flash Drive (Brown) Model TG032GE902CX

**New Business:** EC on summer vacation in August.

Date and Time of Next Meeting: Saturday, July 21, 2012 at 2:00 p.m., 28924 Ruus Road, Hayward.

Respectfully submitted,  
Bayle Emlein, Secretary





# July 2012

Sunday	Monday	Tuesday	Wednesday	Thursday	Friday	Saturday
1	2	3	4 <i>July 4th 2012</i>	5	6 7:30 pm <b>Main Meeting</b>	7 8 pm-Hardware SIG
8	9	10	11	12	13	14 Windows 7 SIG Cancelled
15	16 7:30 pm- Mobile Computing SIG	17	18	19	20	21 2 pm-Exec. Committee Mtg.
22	23	24	25	26	27	28 2 pm-Linux SIG
29	30	31	Check the calendar at <a href="http://www.pcc.org">www.pcc.org</a> for up- to-date information!		See Page 9 for SIG Meeting information.	