

Communicating Without Talking

This month, assistive technology takes center stage.

Linda Wyman, PCC member, is a degreed Speech and Language Pathologist who works for the Oakland Unified School District as an Augmentative Communication / Assistive Technology Specialist,



applying enabling technology to students with different kinds of speech problems, enabling them to perform in the school environment.

In English, this means that she evaluates and applies technology solutions to people who have speech difficulties and would otherwise be unable to communicate with others.

The technology ranges from simple type-and-talk boxes to devices that perform commands based

on eye movement.

Linda will bring several devices to show and experiment with. These include speech generating devices like the DynaVox, that generates speech from an icon-driven touch screen, and the Eyegaze Edge, a multifaceted solution using eye scanners and PC components to track eye movement and translate it into audible speech.

Some of these devices will be available for hands-on experimentation. Try out these technical marvels to gain insight into what is possible with technology today. As always, there'll be good food, good fun, and good friends all around. See you there!



Raffle!

This month, a 50/50 Split. That's 50% of the ticket proceeds goes to you and 50% goes as a fund raiser to PC Community. It's a win/win situation and you get to buy anything you want, anywhere you want, with your half of the money. Can it possibly get any better than this? And, it's YOURS for the price of a ticket!

Tickets are \$5 each, available where you sign in. Need not be present to win.



What's Inside:

| | | | | | |
|------------------------------|---|-------------------------------------|---|------------------------------------|----|
| Newsletter Information | 2 | Map & Directions to Main Meeting .. | 3 | Expiring Memberships | 8 |
| PC Community Officers | 2 | Photo-Editing Software | 4 | SIG Meeting Info | 9 |
| About PC Community | 2 | Put Your PC To The Test | 6 | Penguin Partition | 9 |
| PCC Announcements | 3 | Door Prizes | 8 | Main & Exec. Meeting Minutes | 10 |
| Map to PCC Clubhouse | 3 | Clubhouse Information | 8 | PCC Events Calendar | 12 |

PCC News is the monthly newsletter of
 PC Community (PC Clubhouse)
 P.O. Box 55513
 Hayward, CA 94545-0513

About PC Community



EDITOR
Elsie Smith
 lcms@pacbell.net

Associate Editor: Jan Fagerholm

Online Editor: Diane George

Contributors: Bayle Emlein, Jan Fagerholm, Diane George, Chuck Horner and Elsie Smith.

Deadline: Copy must be submitted no later than the second Saturday prior to the main meeting. Check the newsletter calendar for the date. Submissions should be made by e-mail to the editor, **lcms@pacbell.net**. Advertising rates are available from the editor.

Contents © 2010 PC Community, except as noted. Permission for reproduction in whole or in part is granted to other computer user groups for internal, non-profit use, provided credit is given to PC Community and to the authors of the material.



Adobe InDesign CS2 is used to publish
 PCC News

PCC Officers and Staff

- President — Chuck Horner**
 churck@comcast.net (510) 589-9677
- Executive Vice President — New VP Needed**
 you@righthere.com (510) 555-1234
- Treasurer — Tom Smith**
 smith-tf@pacbell.net (510) 887-4038
- Secretary — Bayle Emlein**
 pcc@ix.netcom.com (510) 652-1726
- VP Clubhouse — Sidney Jordan**
 sjordan321@aol.com (510) 886-8188
- VP Marketing — Christopher Marston**
 christophermarston@yahoo.com (510) 582-0335
- VP Membership — Jan Fagerholm**
 pcc4me@gmail.com (510) 652-1726
- VP Newsletter — Elsie Smith**
 lcms@pacbell.net (510) 887-4038
- VP Programs — Chuck Horner**
 churck@comcast.net (510) 887-4123
- VP Special Projects — Bayle Emlein**
 pcc@ix.netcom.com (510) 652-1726
- Webmaster — Diane George**
 digeorge@sbcglobal.net (510) 538-2449
- APCUG Representative — Diane George**
 digeorge@sbcglobal.net (510) 538-2449
- Network Coordinator — Paul Cooper**
 paulc2553@yahoo.com (510) 733-2613
- Projector Coordinator — Jan Fagerholm**
 pcc4me@gmail.com (510) 652-1726

Board of Directors

- Bayle Emlein**
 pcc@ix.netcom.com (510) 652-1726
- Jan Fagerholm**
 pcc4me@gmail.com (510) 652-1726
- Chuck Horner**
 churck@comcast.net (510) 589-9677
- Elsie Smith**
 lcms@pacbell.net (510) 887-4038
- Michael Wong**
 mfw43@aol.com (510) 538-8075



Thanks to **WeirdStuff** (www.weirdstuff.com)
 for donations for door prizes, raffle items
 and give-aways.

PC Community is a computer users group for people who wish to expand their knowledge and experience of personal computers and software. This is accomplished through monthly general meetings of the full membership where major industry vendors present information, and through smaller focus groups (Special Interest Groups, or SIGs) where members meet to share common computer interests. The group's monthly Main Meeting takes place at Calvary Baptist Church, 28924 Ruus Road, Hayward, at 7:30 P.M. on the first Friday of each month.

PC Community is dedicated to community service, providing enabling technology to people with special needs, working in the community to obtain computer equipment, and working with other computer groups to help people extend their lives through computer technology.

PC Community has a Web site at <http://www.pcc.org>.

Membership dues are \$35.00 per year. \$20.00 for educational and seniors (65 and over), and \$45.00 for family per year. Call 510-436-0799 for more information, or write to PC Community at the address on this page.



**ICEMAN
 Consulting
 Enterprises,
 Inc.**

Thanks to PCC Member **Chris Yager**,
 ICEMAN Consulting Enterprises, Inc.,
 for printing PCCNews.
 iceman@prado.com - (510) 317-5900



PCC is a member of the Association
 of Personal Computer User Groups
 (APCUG)

PCC Announcements

O'Reilly - Books and Media

Review a Book: Review an O'Reilly book and get published in the PCC Newsletter and on the PCC Web Site. Find a book that interests you at www.oreilly.com, e-mail me the name of the book and ISBN so I can order it for you. PCC requires a deposit from you

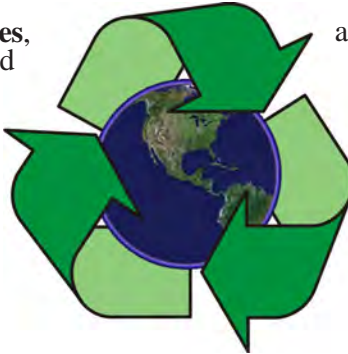


in the amount of the User Group price, a 35% discount. You have 60 days to complete the review, at which time the deposit is refunded and you keep the book.

Elsie Smith - PCC UG Representative to O'Reilly
lcms@pacbell.net or 510-887-4038

PCC Recycle Program is Back, Bigger and Better!

Your used **toner cartridges**, old **cell phones**, used **inkjet cartridges**, old **PDA's** and defunct **iPods** are valuable. Don't toss them in your trash to be used as landfill. They are worth something to PCC and other groups, either in the form of exchange or as discount on products at some local retailers. This not only helps PCC, but also helps our community. You can drop



any of these items off at our Clubhouse or at a Main Meeting. Do your part for PCC and your community! Keep the environment clean by taking a few extra moments to recycle these items with PCC.

contact:
Chuck Horner
churck@comcast.net
510-589-9677

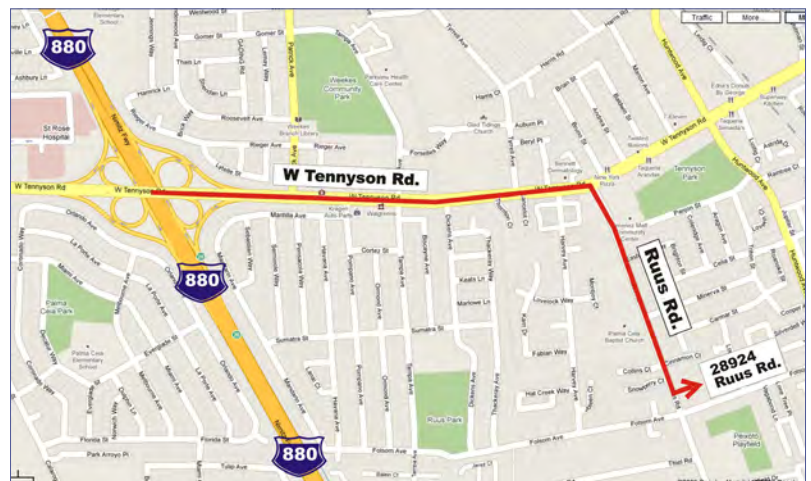
Directions to the PCC Main Meeting

From All Directions: take 880 to the Tennyson Road exit in Hayward. Take the exit toward the hills. Proceed northeast on Tennyson Rd. about 0.7 mile to the 5th stoplight. This will be Ruus Road.

Turn right on Ruus Road and proceed southeast for about 0.4 mile. Look for Calvary Baptist Church on your left.

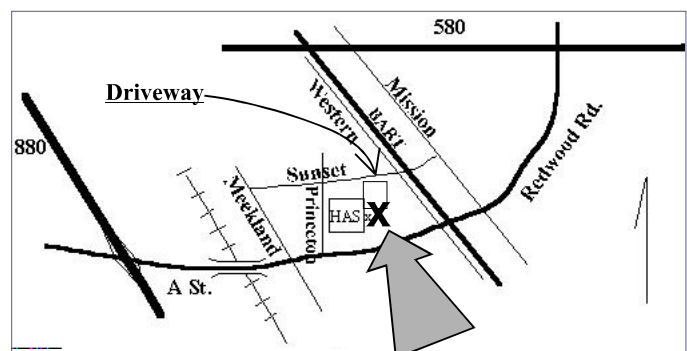
Turn left into the driveway into the parking lot. Parking is available anywhere from the driveway to the back of the lot.

Look for the PCC signs.



Directions to The PCC Clubhouse

From 880: take the A St. exit East (toward the hills). Immediately after crossing the overpass, turn left at the light onto Princeton. Go straight ahead to Sunset Ave, then turn right. After half a block, turn right into the driveway where the playing field meets the parking lot. Drive all the way back past two fences. When facing the Gym, the clubhouse entrance is on the left side.



Head-To-Head: Photo-Editing Software

By Tracy Baker, Smart Computing Magazine

Published by Elsie Smith, Editor

Reprinted with permission from Smart Computing. Visit <http://www.smartcomputing.com/groups> to see what Smart Computing can do for you and your user group.

There was a time when you needed several hundred dollars and a degree in graphic design to edit digital photos, but not anymore. Today's photo editors put an immense amount of power at your fingertips but harness it in a way that makes it manageable even fun to wield.

The main problem you'll have with photo editors is choosing one that suits your needs because there are so many excellent options available, both commercial and free. We looked at several of the top packages and highlighted our favorites here.



Adobe Photoshop Elements 8 Photoshop Elements 8 is an outstanding choice for home users who want much of the power of the professional version of Photoshop CS4 without having to spend heaps of cash or learn a complex interface.

Establishing a media library is blazing fast. The software imported more than 6,500 pictures and a few hundred video files in less than five minutes. A new auto-analysis feature also scans images for faces, making it easy to tag individuals and call up pictures that include them.

You can organize pictures in separate albums, and the interface makes it easy to browse any number of pictures. This software comes with many of the filters that make its big brother so much fun to use. You can do anything from turning a photo into a pencil drawing to fine-tuning color and contrast in just a few simple steps, and most tasks are fully automated.

One of many things we liked about the software is the ability to change the interface based on your needs and level of expertise. For example, in the Edit tab you can

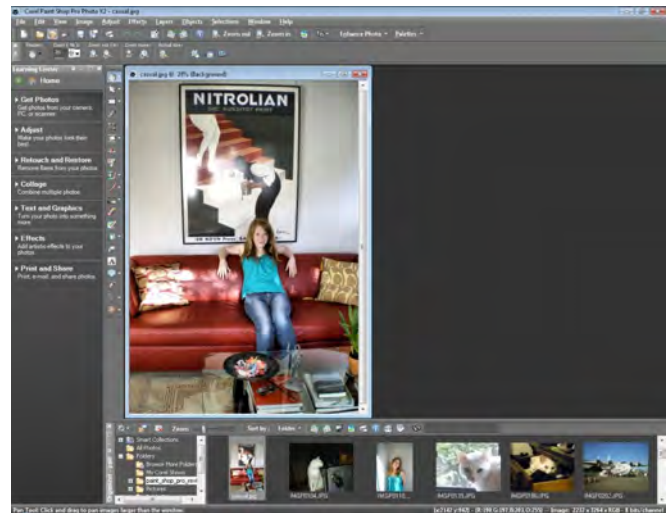
select Edit Full, which provides access to all features; Edit Quick, which provides just the most oft-used options; or Edit Guided, which lets you select what you want to do from a list and then walks you through it, step by step.

Photomerge is back, letting you combine several shots into a single picture (so you can make sure everyone is looking at the camera, for example), but it still suffers from the obvious limitation of needing nearly identical source pictures to work properly. It now also lets you merge several photos with different exposures, and a new Recompose feature also lets you pull subjects (generally people) in a photo closer together without distorting the image.

Photoshop Elements offers a variety of post-editing things to do with your photos, such as applying artistic frames or making calendars. You can upload images to a variety of social networking and photo storage sites. The software also comes with 2GB of online storage at Adobe that can be accessed using a personal URL, making sharing even easier. Photoshop Elements 8 is a strong package for both organizing and editing photos, and the sharing features add an extra level of value.

Corel Paint Shop Pro Photo X2 Ultimate Corel Paint Shop Pro Photo X2 Ultimate combines decent photo organization tools with advanced editing tools to offer a fairly complete photo management suite.

One nice new feature is the Express Lab, which lets you



batch edit photos so that you can accomplish common fixes (such as red-eye removal) very quickly instead of laboriously loading images one by one. The full editor lets you access everything from a simple one-click fix to

Continued on Page 5

Photo-Editing Software

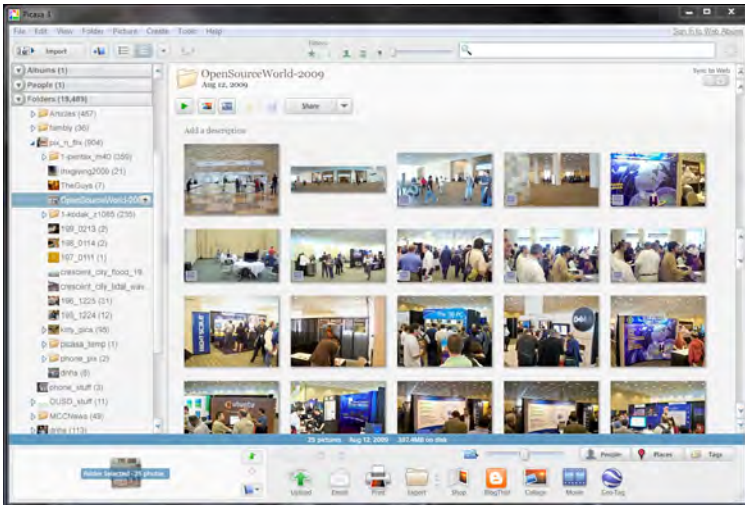
Continued from Page 4

advanced manual settings that can be adjusted with great precision. A new HDR (High Dynamic Range) Photo Merge feature lets you combine pictures of different exposures to obtain a final image that has the extreme contrast HDR is famous for. Other new features such as Thinify (which automatically makes people look thinner) are fun for laughs but not nearly as useful as the software's no-nonsense editing tools.

The only problem with this package is that there is often a bit of lag between clicking a new setting and seeing the results on your screen. This isn't a big deal when making simple edits but is aggravating when testing out a number of different editing tools to see what effect they'll have on a photo.

Google Picasa 3.6 Picasa is one of the easiest photo editors to master. Although it isn't the most powerful in terms of raw features, its interface is outstanding.

One of the program's major strengths is the speed with



which it can root out all the photos on your PC, generate thumbnail previews, and automatically organize them. You can go in and tell the software where to look for pictures (or tell it to stay out of certain folders), but any way you set things up, you'll be hard-pressed to find a program that can pull everything together this quickly.

Picasa excels at letting you tag photos and arrange them into multiple themed albums. You can then store the albums on your computer or upload any of them to the Picasa Web Albums service or nearly any other online photo hosting service or social networking site. You can also easily print photos, generate a collage, or make a photo movie to share with others.

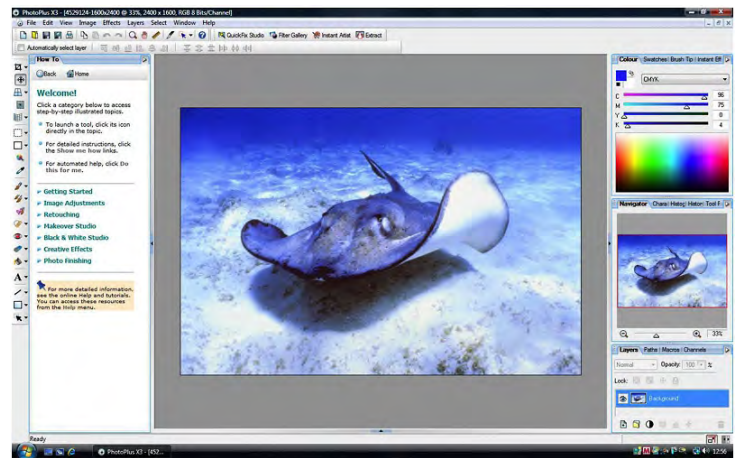
With version 3.5, Picasa introduced Name Tags. This technology recognizes faces in photos so you can easily

label photos by people's names and quickly call up all photos that contain a particular person. There are some drawbacks in that the face detection catches everything, which is a problem for pictures taken in an area teeming with strangers.

The software offers basic but essential editing capabilities, including a Fill Light slider that can save underexposed photos in a pinch. Editing is definitely secondary to organizing with this package, so you will probably want to use this alongside a more robust photo editor. For managing and sharing, however, Picasa 3.6 is just about perfect.

Serif PhotoPlus X3 Digital Studio PhotoPlus X3 has a somewhat difficult interface to master. It works much like professional software, and once you get past the steep learning curve you'll find that the software has everything you need to make your photos look their best.

Fortunately, figuring things out is simplified thanks to a



useful help bar that can be popped out or hidden at will. Novices can also use QuickFix Studio to make common and simple adjustments to photos without having to deal with the more advanced tools, but once you're ready, there's plenty to play with. There are many filters for instantly changing the look of a photo, an Instant Artist feature that lets you turn pictures into paintings, and a variety of tools for making all manner of manual adjustments. Serif doesn't offer a trial version, but it provides a trimmed-down version at www.freerisefsoftware.com. This is some powerful software for the price.

Try Before You Buy

All of the editors reviewed in this article excel in their particular areas, and there's a strong argument to be made for using more than one of them.

All but PhotoPlus X3 have a free trial available (Picasa is free), so be sure to try all of them out so you can decide which combination works best for you.

Put Your PC To The Test Give Your Computer A Performance Boost

By Nathan Lake, Smart Computing Magazine

Published by Elsie Smith, Editor

Reprinted with permission from Smart Computing. Visit <http://www.smartcomputing.com/groups> to see what Smart Computing can do for you and your user group.

As new applications are released, we sometimes find that our computers are no longer powerful enough to effectively run some of them. But among the processor, memory, graphics processor, and hard drive, it can be tough to determine which individual components are slowing your system. In such cases, you need a benchmark utility, which is a program designed to push your hardware to the limits and show you which parts are causing a performance bottleneck. You can also use the benchmark utility to discover if the tweaks you've made to a computer have made a difference in performance. Here, we'll show you how to use and analyze the benchmark utility built into Windows, as well as some popular third-party programs.

Windows Experience Index

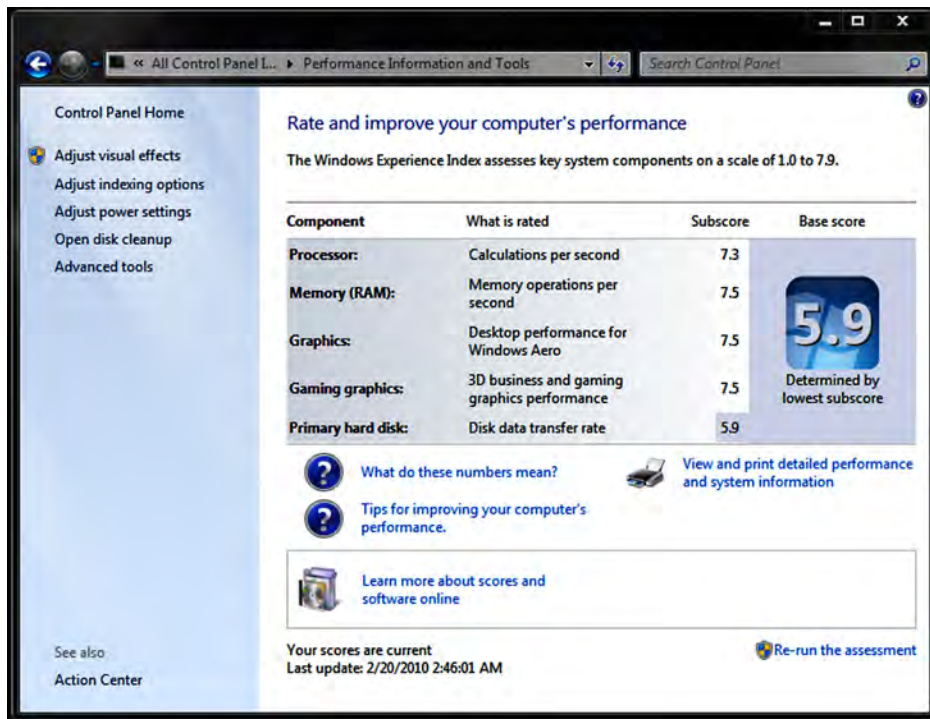
Available in both Windows Vista and Windows 7, Microsoft added the Windows Experience Index to help you measure the capabilities of your computer's hardware. To open the utility, click the Start button, right-click Computer, and select Properties. You'll likely see a system rating, because Windows runs the Windows Experience Index right after the OS (operating system) is first installed.

Note that if you've changed or upgraded equipment in your PC—or even updated the drivers—Windows will indicate the test needs to be updated. Click the link next to the rating number. You can rerun the test by clicking the Refresh Now button, but anyone trying to determine

if his changes have made a difference should first write down the current scores. This way, you'll have numbers to compare and be able to see where the PC improved. If you've upgraded hardware and Windows hasn't detected the changes, click the Windows Experience Index link and select the Rerun The Assessment link (for Win7 users) or the Update My Score button (for Vista users).

The Windows Experience Index rates the different components in your PC to help you determine which one is slowing you down.

When you open the Windows Experience Index, you'll see the subscores for each of the primary components on your PC. Two categories exist for graphics, because one



test analyzes the quality of your graphics processor for typical office use, while the other looks at how well the PC can handle 3D rendering. Microsoft bases the overall score on the lowest performing test, rather than averaging the results, because the component with the lowest score might create a bottleneck that prevents the other hardware from working up to its full potential.

In Vista, hardware can score anywhere between 1 and 5.9, while Win7 bumps the range up to 1 to 7.9. Microsoft indicates that a computer with an overall score of around 2 can sufficiently perform basic computer tasks, such as surfing the Web or running an office productivity app. A result of 3 means that the PC can handle Windows Aero interface, which delivers features such as translucent boarders. With a score of 4 or better (6 or better on Win7's

Continued on Page 7

Put Your PC To The Test

Continued from Page 6

scale), it's likely that your PC can easily play back HD (high-definition) video and run most of today's video games. A score of 5 or higher (6 or better in Win7) and your computer should handle most of the current software and games you can throw at it.

The Windows Experience Index is a great way to determine which component is slowing you down. For instance, if your PC scores 4 or higher in every test except Gaming Graphics, you'll know the graphics card (or integrated graphics processor) is what's holding your system back. If the scores all rate below 2 or 3, consider investing in a brand-new PC, rather than upgrading the parts one by one. For more detailed information about the performance of individual parts, it's best to download a third-party benchmark utility.

SiSoftware Sandra 2010 Lite

One of the more popular free benchmarking utilities is SiSoftware Sandra Lite, and you can download Sandra 2010 Lite from the download links at <http://tinyurl.com/ydch7bk>. (Choose a link in the Affiliate Free Download Sites area.) We like Sandra Lite, because the app provides you a chart with the score of your component, such as the processor or graphics card, as well as how that part compares with the other common options for that piece of equipment. For example, if you run a benchmark that tests your hard drive, the chart will show the scores for four other drives. This way, you can examine the chart to see how much faster your PC could run with a higher-end component.

When you open Sandra 2010 Lite, you'll see a variety of modules, including Hardware (provides info about the

current hardware on your PC), Software (lets you discover information about your OS and drivers), and Benchmarks. Double-click the Benchmarks module and Sandra 2010 Lite will list the types of tests you can perform. There are categories such as Storage Devices, Processor, and Network, so you can test the variety of hardware and peripherals attached to your computer.

To run one of the benchmarks, double-click the test, such as the Video Rendering test under Graphics Processor,

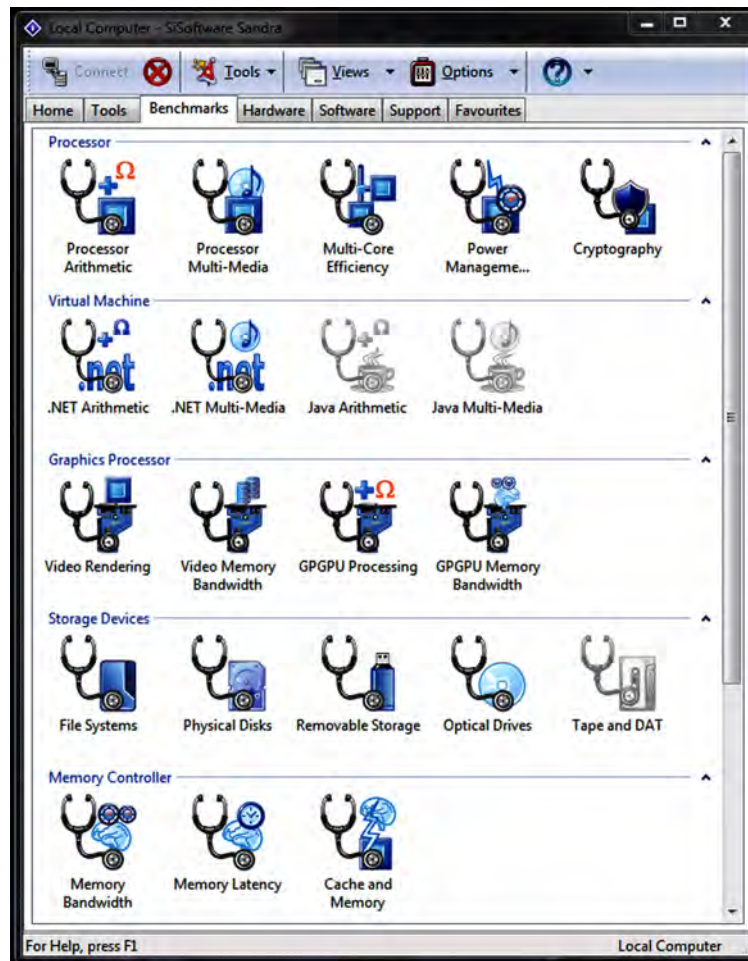
and SiSoftware will bring up the Customize Rank Engines window. Here, you can allow SiSoftware to incorporate rankings from other testers and make the results from your system public. If you're OK with the options after reading through the Privacy Statement, click I Have Read And Agree With The Privacy Statement checkbox and click the Close button .

Sandra 2010 Lite will then open the benchmark and find the most popular hardware for that category to show you where your hardware stacks up. When the buttons at the bottom of the window appear

in color, click the Refresh button (a set of blue arrows). After it finishes, Sandra 2010 Lite will score your PC's hardware in red on the chart, so you can see how it compares to other options. You can also run the test before and after you install a new part, or upgrade a driver, to see how much speed you've gained.

Benchmark Tips

On its own, a benchmark result doesn't mean much, but when you have reference numbers, the differences among the results provide valuable insight. Ideally, you should run the benchmark before you upgrade anything on the PC, so you can compare the numbers when you rerun the utility.



Door Prizes

Congratulations to all the members who won door prizes at the Main Meeting!

New Member Drawing:

Inland headphones Sandra Rowland

General Drawing:

1C Company bag..... Bob Sorensen

1C Company hatJoy Somerville

1C Company tee shirt..... Bud Gallagher

Apress bag..... Dan Peterson

Inland headphonesBertillion Allen

Maxtor 1394 CardBus Adapter Card Michael Wong

Muvee Reveal v. 8..... Bob Kiessling

Pepcom bag..... Andrew Tews

Sandisk 2 G flash drive Bayle Emlein

Sunbelt Systems Vipre security software..... Bob Rofen

Raffle Prize:

50/50 Split..... Anita Schmidt

PCC Newsletter Wins 2nd Place

PCC News won second place in the 2007 APCUG Newsletter Contest at CES (Consumer Electronics Show) in Las Vegas in January. The award is for medium sized groups (100 to 300 Members).



Door Prize Donations

O'Reilly Media generously donates the books that are our door prizes. Go to www.oreilly.com and pick books you'd like to see on our door prize table. You might win one you choose. E-mail the names and ISBN of the books you want me to request from O'Reilly.

Elsie Smith

lcms@pacbell.net

Clubhouse Information!

Hayward Adult School will remain open this coming school year. The Clubhouse is open on Wednesday evenings from 4 PM to 7 PM, and on the Saturdays HAS conducts traffic school. If and when traffic school is held will not be known at press time and therefore cannot appear on the Newsletter calendar. Please check our PCC Web site (www.pcc.org) to learn if the Clubhouse will be open on a specific Saturday.

Membership Dues

As of January 1, 2007, the following changes went into effect:

Regular.....\$35.00

Family (same household).....\$45.00

Educational, Seniors.....\$20.00

Corporate (maximum 5 memberships).....\$100.00

Remember, you can always pay your dues by mail. Make a check payable to PC Community in the amount listed above to:

PC Community

P.O. Box 55513

Hayward, CA 94545-0513

Dues Expiring This Month!

The following members dues expire this month:

Allen Bertillion

Sharon Evans Brockman

Harold E. Smith

Walter Wronski

Special Interest Group Meetings



Genealogy

Carl Webb - (510) 351-3335
cwebb531@aol.com
Third Tuesday of the month: 6:30pm



Del Parton - (510) 276-4292
delpa@pacbell.net
Saturday after Main Meeting: 8pm



Jan Fagerholm - (510) 652-1726
pcc4me@gmail.com
Last Saturday of the Month: 2pm



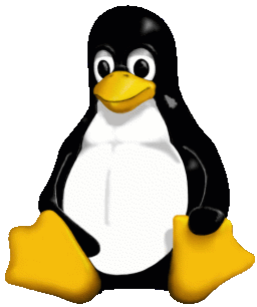
Dan Dolgin - (510) 895-8845
dandolgin7@comcast.net
3rd Monday of the month: 7:30pm
<http://www.pcc.org/mobile>



Chuck Horner - (510) 589-9677
churck@comcast.net
3rd Monday of the month: 7:30pm
<http://www.pcc.org/mobile>



Bud Gallagher - (510) 269-3623
budgall@comcast.net
2nd Saturday of the month: 1pm



The Penguin Partition Linux for Human Beings

by Jan Fagerholm, PCC Penguinista

Linux Mint 9 came out last month, and, of course I installed it. It's based on Ubuntu 10.04 and inherited its speedups. It's favored by people who are used to Windoze because its menu structure is

similar, that is to say non-Ubuntu, which is decidedly Mac-like. DistroWatch has Mint number 3 in popularity behind the number 1 rated Ubuntu. (Fedora, Red Hat's user-oriented open source distro is in the number 2 spot.)

This being a computer user group, it's natural to focus on desktops. But, like you, Linux has broadened its technology interests beyond the ubiquitous PC. Yes, Linux runs the Internet by being about 60 percent of the Web servers in the world, and it runs some pretty big names on the Internet, such as Google, Amazon, and others. Of the top ten Web sites in terms of bandwidth, Linux runs nine of them. The surprise here for us techies is that BSD (Berkeley Software Distribution) Unix is not even on this list. BSD is a more "pure" Unix generally preferred by deep-dish technoids. The editorial here is that many of the changes that Linux brings to the Unix platform are

convenience improvements, making the platform easier to use, and this accounts for the proliferation of Linux.

Embedded Linux accounts for the greatest growth segment in the Linux world. You may have seen billboards for Android, the embedded operating system developed by Google and used on phones, tablets, and other devices.

Android has gained traction this year, number two on smartphones just behind Apple's iPhone and way ahead of the Blackberry. Android apps have reached critical mass which has accelerated the adoption of Android. (On an un-technical note, notice that Apple's stock surpassed Microsoft this May, and is now considered the best-valued stock in the tech sector.)

Linux appears on many more devices that don't have a recognizable front end, such as the electronic control units in cars. (I was trying real hard not to say, "would you trust Windows to run your car?", but I couldn't help it.)

If you use technology, and whether you realize it or not, you are a Linux user. Try going back to Linux's roots and put it on your desktop. You will be pleasantly surprised.





PCC Main and Executive Meeting Highlights

Secretary — Bayle Emlein
pcc@ix.netcom.com

Treasurer — Tom Smith
smith-tf@pacbell.net

Main Meeting Highlights

July 9, 2010

The meeting was called to order by President Chuck Horner at 7:37 PM.

In addition to drawing and raffle tickets, Harold Smith has cards for writing questions for earnest discussion and expert answers after the break.

Chuck greeted new and renewing members. Member Lamont Shadowens introduced his daughter as a new member.

SIG Announcements:

Bud Gallagher said that he likes the new interface to Office 2010, but that he finds no major improvements over the previous version. The Windows 7 SIG meets at his house tomorrow (the second Saturday of the month).

The Spectacular Linux SIG will meet the last Saturday of July at the Smiths'. The SIG will probably look at the new version of MintLinux and go over the nuts and bolts of exchanging files between Linux and Windows. Both directions.

The Hardware SIG will meet tomorrow night at the Smiths'. It's called the Hardware SIG, but it's probably Windows that's broken. In either case, bring documentation along with your problem computer.

General Announcements:

The Clubhouse is open Wednesdays from 3:30 to 6, approximately. Hayward Adult School is open Saturdays only when they are running Traffic School. There will be no traffic school during the summer.

Cartridge World, who gives us credit for recycled cartridges, has moved to Foothill Boulevard in Hayward. Let them know that the cartridges are to be credited to PC Community.

TechNet subscriptions have dropped to \$199.

Presentation:

Steve Roberts, serial entrepreneur and owner of The Printer Works in Hayward, spoke to the group about printers. Having been through several incarnations, Printer Works now supplies parts for individuals, companies, and governmental agencies as well as selling remanufactured printers.

They specialize in HP Laserjet printers because they are

built to last and the cartridges are relatively cost effective.

Each kind of printer has its own Achilles heel. Right now, solders that meet the new European low-lead standards have been showing up as weak points while manufacturers are learning the new manufacturing standards and perfecting their techniques.

When printer shopping, ask how many pages the toner and cartridge last. Then you can calculate the cost per page. Good systems can print for half a cent a page. Using refurbished cartridges, a company can print for less than that, so that they can provide service, printer maintenance and supplies for a penny a page and still make a huge profit.

When shopping, first look to see that each color is in a separate cartridge so that you don't have to replace all the colors when only one runs out. Ink bottles now typically contain a chip that reports each print job so they may report being out of ink when they are not, but calculate that they have printed a predetermined number of pages. Some chips can be reset when the cartridge is refilled, some cannot.

Steve recommends buying a good used printer. The roller jets that pick up the paper usually wear out first. His company sells a roller repair kit. The fuser also fails often, because of the heat.

The Printer Works primary role is to supply parts for printer repair. While their primary market is the printer repair professional, they also serve individual users.

HP printers have many of the features that the more expensive digital senders have. Digital senders can send encrypted files and they can save a file to a drive without further downloads or files.

Some third party cartridge companies do it right, a few do not and have given the industry a bad name. Larger companies such as Staples and Costco have done enough research to weed out the bad ones. Color mixes have been patented, so that remanufactured cartridge colors will be a bit 'off' to avoid patent infringement.

Looking into his crystal ball, Steve sees a lot less printing in the future. Color and all-in-one are likely to be the way printing goes. Inkjets and lasers each have their advantages and he is not clear which will win.

Break:

Thanks to George Kornbluth and Anita Schmidt for organizing refreshments for the break.

Continued on page 11

Main Meeting Highlights

Continued from page 10

Member questions:

Sally Holt got a message to update Adobe Flash. Answer: Flash needs to be updated in each browser. Usually the problem shows up in Internet Explorer.

Bud suggests writing or printing out the exact error message to bring in. Googling an error message can also provide information about the meaning and solution.

Is there a best method to find and eliminate duplicate files in Windows 7? Bud Gallagher suggests just leaving them alone since disk space is cheap. Jan suggests checking CNET's download.com for a utility that puts duplicate files in a known location so you know where to get them back when you need them. Since the Win98 problems, the .dll duplicate and shared file problem has been largely cleaned up, especially in Windows 7.

Hulu allows you to watch television programs on your computer, on your schedule.

Remember: Do not assume that the Clubhouse is open. Check the Web site and/or check with Sid Jordan.

The meeting was adjourned at 9:39 PM.

Next meeting: August 6, 2010 at Calvary Baptist Church, 28924 RuusRoad; Hayward, California.

Respectfully submitted,
Bayle Emlein, Secretary

Executive Committee Meeting Highlights

July 17, 2010

The meeting was called to order at 2:13 PM by President Chuck Horner.

Members present: Bayle Emlein, Jan Fagerholm, Diane George, Chuck Horner, Sid Jordan. Absent: Elsie Smith, Tom Smith.

The minutes of the June meeting were approved.

Old Business: The EC will be on vacation in August. Chuck will check to see if Chris Marston is still interested in taking on marketing duties for PCC.

President's Report - Chuck Horner: Chuck has several leads about potential presentations.

Executive Vice President - Position open.

Treasurer - Tom Smith: As of June 19, 2010

| | |
|------------------|------------|
| Checking Account | \$2,882.79 |
| CD | \$3,365.25 |
| Total | \$6,248.04 |

Secretary - Bayle Emlein: Nothing special to report.

VP Clubhouse - Sid Jordan: The Clubhouse is officially open 4 PM to 7 PM on Wednesdays only until further notice.

The Clubhouse crew is looking for a venue to continue having cookouts on the Saturday following the main meeting.

Sid will discuss developing a label letting recipients know who refurbished their computers for them.

VP Marketing – Position open.

VP Membership - Jan Fagerholm: Member count as of June 19, 2010.

The database is back. There is a backlog for data entry, so there are still some people missing from the count. People need to update their email and physical address information. Jan will develop a form.

| Type | Number | Percent |
|-----------|--------|---------|
| Regular | 38 | 54.29 |
| Senior | 29 | 41.43 |
| Student | 1 | 1.43 |
| Associate | 2 | 2.86 |
| Total | 70 | |

It was agreed that Harold Smith be granted membership renewal for his volunteer efforts managing the raffle and door prize tickets and any other necessary activities at the sign-in activities sign-in table.

VP Newsletter - Elsie Smith:

June 19, Saturday midnight, July Newsletter submission deadline.

July 24, Saturday midnight, August Newsletter submission deadline.

August 21, Saturday midnight, September Newsletter submission deadline.

Programs - August: Linda Wyman

VP Special Projects - Bayle Emlein: The changeover from MAR to Microsoft Registered Refurbisher is still in transition. PCC has submitted the application.

Michael Wong and Sid Jordan have been working with the East Bay Stand Down. The Clubhouse is providing computers and printers for the program.

Webmaster - Diane George: If there are any changes to the Web site, let Diane know so she can update it.

Calendar: See the Web site for the latest updates and changes in SIG meetings.

Remember to check the Web site before going to the Clubhouse on a Saturday.

In the Members Only section of the Web site EC members can find instructions about how to submit directly to the Web site. Diane is setting up separate locations for various kinds of information.

Fund Raiser: August: Stay tuned.

New Business: None.

Date and Time of Next Meeting: Saturday, September 18, 2010 at 2:00 PM, 28924 Ruus Road, Hayward.

The meeting was adjourned at 3:12 PM.

Respectfully submitted,
Bayle Emlein, Secretary



August 2010

| Sunday | Monday | Tuesday | Wednesday | Thursday | Friday | Saturday |
|--------|--|------------------------------------|---|----------|---|--|
| 1 | 2 | 3 | 4 | 5 | 6 7:30 pm Main Meeting | 7 Clubhouse Closed 8 pm-Hardware SIG |
| | | | → 4 pm-7 pm Clubhouse Open | | | |
| 8 | 9 | 10 | 11 | 12 | 13 | 14 Clubhouse Closed 1 pm-Windows 7 SIG |
| | | | → 4 pm-7 pm Clubhouse Open | | | |
| 15 | 16 7:30 pm- Mobile Computing SIG | 17 6:30 pm- Genealogy SIG | 18 | 19 | 20 | 21 Clubhouse Closed 2 pm-Exec. Committee Mtg. Newsletter Deadline! |
| | | | → 4 pm-7 pm Clubhouse Open | | | |
| 22 | 23 | 24 | 25 | 26 | 27 | 28 Clubhouse Closed 2 pm-Linux SIG |
| | | | → 4 pm-7 pm Clubhouse Open | | | |
| 29 | 30 | 31 | Check the calendar at www.pcc.org for up-to- date information! | | See Page 8 for Clubhouse information. | See Page 9 for SIG Meeting information. |